

City of East Moline

Annual Facility Inspection Report for NPDES Permit

For Storm Water Discharges from MS4

NPDES Permit No. ILR400330

Report Period: From March 2007 to March 2008



Illinois Environmental Protection Agency

Bureau of Water • 1021 N. Grand Avenue E. • P.O. Box 19276 • Springfield • Illinois • 62794-9276

Division of Water Pollution Control ANNUAL FACILITY INSPECTION REPORT

for NPDES Permit for Storm Water Discharges from Separate Storm Sewer Systems (MS4)

This fillable form may be completed online, a copy saved locally, printed and signed before it is submitted to the Compliance Assurance Section at the above address. Complete each section of this report.

Report Period: From March, 2007 To March, 2008

Permit No. ILR40 0330

MS4 OPERATOR INFORMATION: (As it appears on the current permit)

Name: City of East Moline Mailing Address 1: 912 16th Avenue
Mailing Address 2: 1200 13th Avenue County: Rock Island
City: East Moline State: IL Zip: 61244 Telephone: 309-751-2310
Contact Person: Donald F. Mayhew II, P.E. Email Address: dmayhew13817@gmail.com
(Person responsible for Annual Report)

Name(s) of governmental entity(ies) in which MS4 is located: (As it appears on the current permit)

City of East Moline

THE FOLLOWING ITEMS MUST BE ADDRESSED.

A. Changes to best management practices (check appropriate BMP change(s) and attach information regarding change(s) to BMP and measurable goals.)

- | | | | |
|--|--------------------------|---|--------------------------|
| 1. Public Education and Outreach | <input type="checkbox"/> | 4. Construction Site Runoff Control | <input type="checkbox"/> |
| 2. Public Participation/Involvement | <input type="checkbox"/> | 5. Post-Construction Runoff Control | <input type="checkbox"/> |
| 3. Illicit Discharge Detection & Elimination | <input type="checkbox"/> | 6. Pollution Prevention/Good Housekeeping | <input type="checkbox"/> |

B. Attach the status of compliance with permit conditions, an assessment of the appropriateness of your identified best management practices and progress towards achieving the statutory goal of reducing the discharge of pollutants to the MEP, and your identified measurable goals for each of the minimum control measures.

C. Attach results of information collected and analyzed, including monitoring data, if any during the reporting period.

D. Attach a summary of the storm water activities you plan to undertake during the next reporting cycle (including an implementation schedule.)

E. Attach notice that you are relying on another government entity to satisfy some of your permit obligations (if applicable).

F. Attach a list of construction projects that your entity has paid for during the reporting period.

Any person who knowingly makes a false, fictitious, or fraudulent material statement, orally or in writing, to the Illinois EPA commits a Class 4 felony. A second or subsequent offense after conviction is a Class 3 felony. (415 ILCS 5/44(h))

Owner Signature:

Joseph B. Miller

Printed Name:

Date:

Acting Director of Engi

Title:

EMAIL COMPLETED FORM TO: epa.ms4annualinsp@illinois.gov

or Mail to: ILLINOIS ENVIRONMENTAL PROTECTION AGENCY
WATER POLLUTION CONTROL
COMPLIANCE ASSURANCE SECTION #19
1021 NORTH GRAND AVENUE EAST
POST OFFICE BOX 19276
SPRINGFIELD, ILLINOIS 62794-9276

A.Changes to BMPs (best management practices) and Measurable Goals

A. Public Education and Outreach

1. Distribute Paper Material
2. Speaking Engagement
3. **Public Service Announcement**

BMP: Post Educational Material on the City's website

Measurable Goals including frequencies-Date and Number of Web hits

4. **Community Event**

BMP: Event Participation-Bald Eagle Days or Earth Day

Measurable Goals including frequencies-The number and dates attended

5. Classroom Education
6. Other Public Education

B. Public Participation

1. Public Panel
2. **Educational Volunteer**

BMP: Community cleanups along local waterways

Measurable Goals including frequencies-The percentage of the community participating and the number of cleanups per year.

3. Stakeholder Meeting
4. Public Hearing
5. Volunteer Monitoring
6. Program Involvement

7. **Other Public Involvement**

BMP: Storm Drain Stenciling

Measurable Goals including frequencies-The number and date drains stenciled. The number of volunteers per date of stenciling.

C. Illicit Discharge Detection and Elimination

1. Sewer Map Preparation

BMP: Storm Sewer System Map

Measurable Goals including frequencies-The number of feet of storm sewer shown on the map. The number of outfalls detected.

2. **Regulatory Control Program**

BMP: Illicit Discharge Ordinance

Measurable Goals including frequencies-1. Review and update ordinance. 2. Publicize the ordinance and the changes. 3. Develop and implement enforcement procedures.

3. Detection/Elimination Prioritization Plan
4. Illicit Discharge Tracing Procedures
5. Illicit Source Removal Procedures
6. Program Evaluation and Assessment

A.Changes to BMPs (best management practices) and Measurable Goals

7. Visual Dry Weather Screening

BMP: Detect and address dry-weather flow

Measurable Goals including frequencies-1. Date and identify storm water outfalls. 2.

Eliminate contaminated dry-weather discharges to the storm sewer conveyance system with dates and completed.

8. Pollutant Field Testing

9. Public Notification

10. Other Illicit Discharge Controls

BMP: Promote household Hazardous waste disposal

Measurable Goals including frequencies-Residents of East Moline can take their household hazardous waste to the Waste Commission of Scott County for disposal. The Waste Commission keeps a record of East Moline residents, by year, that use their service. In turn,

the Waste Commission emails the City of East Moline's engineering department this data. The engineering department stores this data for future use. Handouts have been distributed

in the past. In the future, the City will post this available free service on it's website.

D. Construction Site Runoff Control

1. Regulatory Control Program

BMP: Storm Water Control Ordinance

Measurable Goals including frequencies-The date the ordinance was approved by the City.

2. Erosion and Sediment Control BMPs

3. Other Waste Control Program

4. Site Plan Review Procedures

BMP: Procedures for review of construction site plans

Measurable Goals including frequencies-1. Develop checklist for construction site plan review. 2. Document construction site plans reviewed.

5. Public Information Handling Procedure

BMP: Procedures for public to submit information. Report a Problem Page on the City's website

Measurable Goals including frequencies-The number of phone messages and/or emails submitted by the public.

6. Site Inspection/Enforcement Procedure

BMP: Procedures for construction site inspection

Measurable Goals including frequencies-1. Develop Inspector certification program and training. 2. Implement the certification program.

E. Post Construction Runoff Control

1. Community Control Strategy

2. Regulatory Control Program

BMP: Post Construction Ordinance

Measurable Goals including frequencies-Determine if an ordinance was developed to address post-construction run-off. 2. The projected amount of impervious cover reduced under the

A.Changes to BMPs (best management practices) and Measurable Goals

new ordinance. 3. The number of enforcement actions that occur because of the new ordinance.

3. Long Term O&M Procedures

BMP: A plan for the long-term operation and maintenance of BMPs by developing and training staff on Post Construction BMP Manual.

Measurable Goals including frequencies-The development and implementation of an operation and maintenance schedule for BMPs.

4. Pre-Construction Review of BMP Designs

BMP: Develop and train staff on Post Construction BMP Manual

Measurable Goals including frequencies-1. Provide approved BMPs to meet the City's pollution control objectives. 2. Provide training to properly design and review plans for post construction controls.

5. Site Inspection During Construction

6. Post-Construction Inspections

7. Other Post-Construction Runoff Controls

F. Pollution Prevention/Good Housekeeping

1. Employee Training Program

2. Inspection and Maintenance Program

3. Municipal Operations Storm Water Control

4. Municipal Operations Waste Disposal

5. Flood Management/Assess Guidelines

6. Other Municipal Operations Controls

BMP: Reduce and eliminate the discharge of pollutants

Measurable Goals including frequencies- Review existing programs and the practice in place.

*Active BMPs are in red.

These BMPs and Measurably Goals have been the same from March 2003 to April 2018.

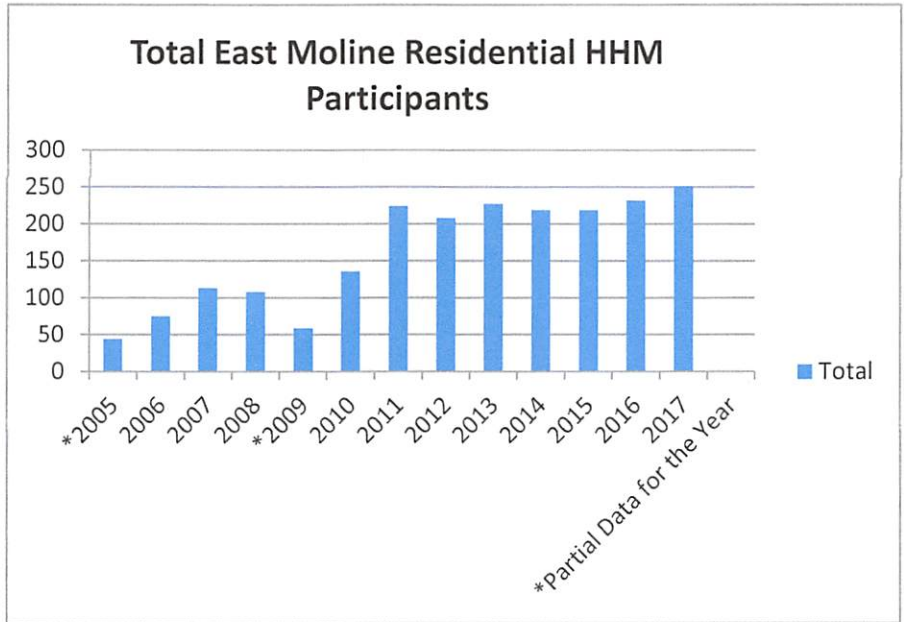
B. 1. Status of Compliance with Permit Conditions: 2. An assessment of the appropriateness of your identified best management practices and progress towards achieving the statutory goal of reducing the discharge of pollutants to the MEP (maximum extent possible): 3. Your identified measurable goals for each of the minimum control measures:

From March of 2003 to January 2018, the City of East Moline thought they had **generally** complied with their NPDES permit in as so what the NPDES permit was trying to achieve. Upon further thorough examination of their NPDES permit, the City of East Moline **did realize** that they needed to alter three main items:

1. Improve their filing system. This includes (this is the main item) making the files easily accessible by others.
2. Changes to the City of East Molines selected BMPs and measurable goals.
3. Filing past annual reports

**C. Yearly Totals of East Moline Residential HHM Participants
2005-2017**

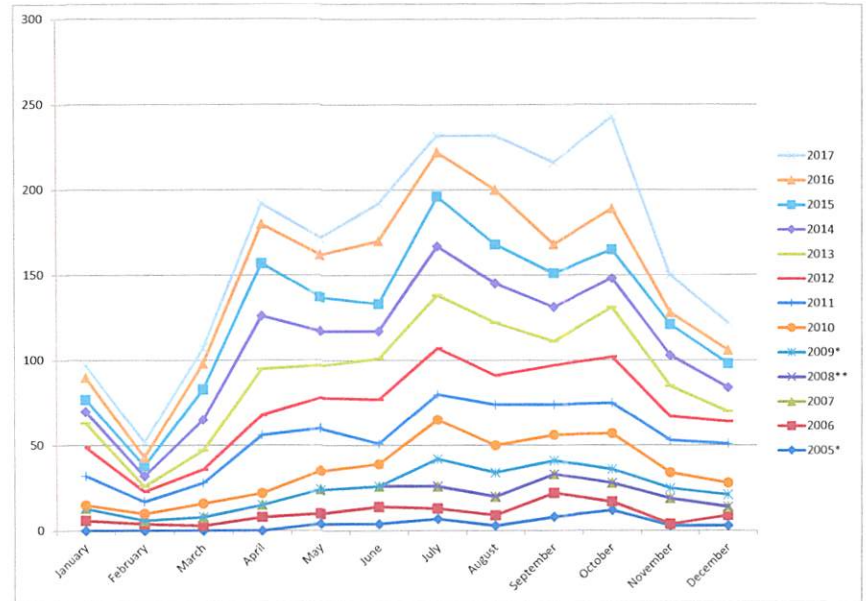
Year	Total
*2005	44
2006	75
2007	113
2008	108
*2009	59
2010	136
2011	224
2012	208
2013	227
2014	219
2015	219
2016	232
2017	251



*Partial Data for the Year

**C. Yearly Totals of East Moline Residential HHM Participants
2005-2017**

	2005*	2006	2007	2008**	2009*	2010	2011	2012	2013	2014	*Partial year **Year end report used, no monthly breakdowns available
January	N/A	6	7		N/A	2	17	17	14	7	
February	N/A	4	2		N/A	4	7	6	3	6	
March	N/A	3	5		N/A	8	12	8	11	18	
April	N/A	8	7		N/A	7	34	12	27	31	
May	4	6	14		N/A	11	25	18	19	20	
June	4	10	12		N/A	13	12	26	24	16	
July	7	6	13		16	23	15	27	31	29	
August	3	6	11		14	16	24	17	31	23	
September	8	14	11		8	15	18	23	14	20	
October	12	5	11		8	21	18	27	29	17	
November	3	1	15		6	9	19	14	18	18	
December	3	6	5		7	7	23	13	6	14	
TOTALS	44	75	113	108	59	136	224	208	227	219	
	2015	2016	2017	2018	2019	2020	2021	2022	2023	2024	
January	7	13	7								
February	6	5	9								
March	18	15	9								
April	31	23	12								
May	20	25	10								
June	16	37	22								
July	29	26	10								
August	23	32	32								
September	20	17	48								
October	17	24	54								
November	18	7	22								
December	14	8	16								
TOTALS	219	232	251	0	0	0	0	0	0	0	



D. Summary of the Storm Water Activities the City of East Moline undertook in the reporting year:

2007 XSTREAM CLEANUP



E. Notice

The City of East Moline is not relying on another government entity to satisfy some of its permit obligations.

F. 2007 Construction Projects

001-2007 Storm Water Infra & Levee Study - McClure	027-2007 Quarter Lot 2 Remediation	054-2007 KVF Quad Transformer
002-2007 Miss & Sugar Creek Levee Impr	028-2007 Street Surfacing Program	055-2007 Bowker Culvert
003-2007 Ravine & Watershed Impr	029-2007 Grand Illinois Trail Bike Path	056-2007 Gomez Bldg Addition
004-2007 Stormwater Rate Study - Stanley	030-2007 7th Street Resurfacing 34-41st Ave	057-2007 KLK Warehouse
005-2007 Waste Water Treatment Plant Impr	031-2007 Meadowlawn 6th Drainage	2007 MFT MES
006-2007 Sewer Rate Study - Stanley	032-2007 32nd Ave Street Light	COW-Council
007-2007 Water System Study - V&K	033-2007 Landfill Leachate Collection	Ditch Surveys
008-2007 Water Rate Study - Stanley	034-2007 Babcock Water & Sewer Extension	IH Mississippi Valley Credit Union
009-2007 Triumph Foods Development	035-2007 Riverstone-Arnold Annexation Plat	Mitchell Park Ravine
010-2007 Barstow Road Improvements	036-2007 Windmill Restaurant Expansion	Water-Sewer-Storm Rates
011-2007 Illini Hospital Water Supply	037-2007 Milani Sculpture	Wayfinding Signage
012-2007 19th St - Twin Oaks Intersec Silvis IGA	039-2007 Ravine Storm Sewer Replacement Program	x-Ament-Test
013-2007 Clark Station Building Addition	040-2007 Silvis Water Connection	x-resident issues
014-2007 Hope Creek Care Ctr Development	041-2007 16th Ave Fire Station Drive	100_2803
015-2007 FedEx Development	042-2007 Quarter Wetlands 5th Yr Monitoring	100_2804
016-2007 Ken Curry Construction Development	043-2007 Kennedy Dr-30th Ave LUST	100_2805
017-2007 12th Street Paving - Construction	044-2007 Deere Harvester Credit Union 12th Ave	2007 Job Number Directory
018-2007 1st St Water Main Replacement	045-2007 Green Chevrolet Bldg Addition	City Questions 3-30-07
019-2007 Tempo Marine	046-2007 Iron Wood Villas	Engineering Dept Job Numbering
020-2007 Sugar Creek Levee Repairs	047-2007 SSA Pkg Lot 15th Ave-7th St	Manila folder tab stickers
021-2007 Whiteys-BSB Drainage	048-2007 27th Street Truck Restriction	
022-2007 Northeast Park Entrance Road	049-2007 Qwest Fiber Optic Program	
023-2007 Gateway Park Riverfront Condos	050-2007 St Anne Pkg Lot	
024-2007 Barstow Road IDS	051-2007 Air Land	
025-2007 I-80 Sign Change	052-2007 Quarter Boat Dock Break Water	
026-2007 Sewer Slip-Lining	053-2007 13th Ave Levee	

Status Report

The reason for these documents are as follows:

My previous supervisor was William J. Lauper, PE. I worked for Mr. Lauper from 1998 to 2006. Mr. Lauper was the Director of Engineering Services from 1984 to 2006. In 2006, Mr. Lauper retired and the City hired Tim Kammler, PE as their Director of Engineering Services. In 2007, Mr. Kammler had me put together a "Status Report" regarding the City of East Moline's NPDES permit. It is as follows.

STATUS REPORT FOR COMPLIANCE WITH THE CITY OF EAST MOLINE'S PHASE II NPDES STORM WATER PERMIT

December 14, 2007

I. Background

The 1987 amendments to the Clean Water Act required the United States Environmental Protection Agency (USEPA) to address storm water runoff in two phases. Phase I of the National Pollution Discharge Elimination System (NPDES) Storm Water Program became effective in 1990. Phase I of the NPDES Storm Water Program applied to large and medium Municipal Separate Storm Sewer System (MS4s) and construction sites disturbing between 1 and 5 acres of land. Phase II also expands the industrial "no exposure" exemption from Phase I. The Illinois Environmental protection Agency (IEPA) is in charge of implementing both phases of the NPDES Storm Water Program.

As a small MS4, the City was required to comply with Phase II of the NPDES Storm Water Program by submitting a Notice of Intent (NOI) to IEPA by March 10, 2003. The NOI serves as the application documentation for the NPDES Phase II Permit that applies to storm water discharges from storm sewers and drainage ways within the City's jurisdiction for a permit period of five (5) years. The NOI outlined a plan that called for the implementation of six minimum control measures with a target to improve the storm water quality. Those six minimum control measures are:

1. Public Education and Outreach
2. Public Participation and Involvement
3. Illicit Discharge Detection and Elimination
4. Construction Site Runoff Control
5. Post-construction Runoff Control
6. Pollution Prevention and Good Housekeeping

II. Permit Compliance Assessment

In March 7, 2003 the City submitted their NOI ([attachment 1](#)) to IEPA. It called for the City to implement sixteen (16) Best Management Practices (BMPs). On September 21, 2004, the City received their General NPDES Permit No. ILR40 ([attachment 2](#)). This permit was issued based on the proposed City schedule in the NOI. The reporting period of this permit is from March 1, 2003 to February 29, 2008. As of this report, the City has only implemented ten (10) of the BMPs. The six (6) BMPs not implemented, A.3, A.4, B.7, D.5, E.3, E.4, and are being developed with substantial progress towards completion.

The City's NOI has been summarized in [attachment 3-Table 1](#) and contains the following information:

1. Control measure: List of six minimum control measures
2. Best Management Practice: BMPs selected to satisfy each minimum control measure.
3. Implemented Yes/No: Whether the BMP has been implemented as of this report.
4. Brief Description: A brief description of each BMP.
5. Measurable Goal: The method of measurement for each BMP to determine if the measurable goal has been achieved.
6. Milestone Year: The permit year the BMP was scheduled to be implemented in the NOI.
7. Actual Implementation Date: The actual year the BMP was implemented.
8. Estimated Implementation Date: The projected month and year the BMP will be implemented, if not done so already.

In addition to implementation of BMPs, the City is required to document the Measurable Goals of each BMP implemented.

III. Completed BMPs With A Brief Description In Parentheses

B.2 Educational Volunteer – (Community cleanups along local waterways.)

This BMP has been met by the City by the participation and record keeping for X-Stream Cleanups from August 2004 to August 2007.

C.1 Storm Sewer Map Preparation – (Storm Sewer System Map)

This BMP has been met by the City having the existing storm sewer map. Beginning in the summer of 2007, the City began creating a new storm sewer map. This work is anticipated to be completed by the fall of 2008.

C.2 Regulatory Control Program – (Illicit Discharge Ordinance)

This BMP has been met by the Storm Water Control Ordinance (SWCO), effective October 15, 2007 ([attachment 4](#)). In the attached NOI, the City targeted 2005 as the year they would publicize an Illicit Discharge Ordinance and the enforcement procedure of said ordinance as well as the implementation of the ordinance. This can be found in the SWCO in Article II – Prohibited Actions, Article VIII – Enforcement and Article VIII – Implementation.

C.7 Visual Dry Weather Screening – (Detect and address dry-weather flow)

This BMP has been met. The detection of dry-weather flows is a continual process conducted by City employees. An example of this continual process was during the ravine and watershed inspection and evaluation/assessment (East Moline Job No. 003-2007) from March 14, 2007 to March 20, 2007. City employees looked for dry-weather and non-storm water flows in each of the four (4) watersheds. **Attachment 5** shows the watersheds and areas walked. Another example of this process is the City has their maintenance crews “look for” evidence of dry-weather and non-storm water flows while performing their normal job duties (i.e., potable water service calls). When a dry-weather or non-storm water flow is detected, the property owner is notified and ordered to cease discharge. This type of discharge is dealt with under the SWCO, Article II – Prohibited Actions.

C.10 Other Illicit Discharge Controls – (Promote household hazardous waste disposal)

This BMP has been met by a handout, **attachment 6**, issued by the Maintenance Services (MS) Department and the Finance Department to 1) new residents if requested, 2) new water bill customers, 3) existing water customers in their January and February 2007 water bills and 4) available at the maintenance services front counter. This information will be posted on the City’s website.

D.1 Regulatory Control Program – (Storm Water Control Ordinance)

This BMP has been met by the City by adopting a Storm Water Control Ordinance (SWCO).

D.4 Site Plan Review Procedures – (Procedures for review of construction site plans)

This BMP has been met by the City by adopting a Site Plan Submittal and Review policy (SPSRP), **attachment 7**.

D.6 Site Inspection / Enforcement Procedures – (Procedures for construction site inspection)

This BMP has been met by the City by adopting a Storm Water Control Ordinance (SWCO).

E.2 Regulatory Control Program – (Post Construction Ordinance)

This BMP has been met by the City by adopting a Storm Water Control Ordinance (SWCO).

F.6 Other Municipal Operations Controls – (Reduce and eliminate the discharge of pollutants)

This BMP has been met by the City. Pollution prevention is an on-going BMP that is adhered to by the City and is accomplished by the following operations:

1. Street and Public Parking lot sweeping
2. Roadway maintenance
3. Automobile maintenance
4. Hazardous material storage
5. Illegal dumping control
6. Road salt application and storage
7. Used oil recycling

IV. Proposed method and date of compliance for the six (6) incomplete BMPS

1. A.3 Public Service Announcement – Post Educational Material on City’s website

The engineering department will work with the IT department to ensure educational material is posted on the City’s website.

Anticipated Compliance Date-Winter 2008

2. A.4 Community Event – Event Participation

The engineering department is scheduled to participate in Bald Eagle Days in January 2008.

Anticipated Compliance Date-Winter 2008

3. B.7 Other Public Involvement – Storm Drain Stenciling

The engineering department will schedule a storm water stenciling in the new future and select which storm water inlets will be chosen.

Anticipated Compliance Date- Winter 2008

4. D.5 Public Information Handling Procedures – Procedures for public to submit information

The ideal way to meet this BMP would to list a number to call and an email link so the public can report information to the City. This feature will be added to the City’s Storm Water Section on the website. This will be done in conjunction with A.3 that is mentioned above.

Anticipated Compliance Date-Winter 2008

5. E.3 Long-Term Operation and Maintenance Procedures – Plan for long term operation and maintenance of BMPs.

The engineering department will select and implement a long-term operation and maintenance program for the BMPs utilized by the City to reduce or eliminate storm water pollution.

Anticipated Compliance Date-Winter 2008

6. E.4 Pre-Construction Review of BMP Designs – Develop and train staff on Post Construction BMP Manual

The engineering department will develop and schedule a training seminar for selected City staff.

V. Summary

The City is deficient in three ways:

1. BMP Implementation-Only ten (10) of the sixteen (16) BMPs have been implemented. The remaining six (6) BMPs need to be implemented ASAP.
2. Measurable Goals-The documenting and record keeping of the measurable goals of BMPs completed is incomplete. This documentation should be completed and stored in one central location. The records should be filed in a manner that would allow someone other than the designated “storm water” staff employee to locate the desired information when requested by the IEPA.
3. The annual inspection form, **attachment 8** has never been submitted to the IEPA. The deadline for the submission is June 1 for each year that the permit is in effect. The City may consider contacting the IEPA regarding the non-submissions of past inspection forms and be honest as to the reasons of non-compliance. In any case, the Annual Inspection Form should be submitted by June 1, 2008.

It is very plausible that the City will have its General NPDES Permit completely implemented by the expiration date of February 29, 2008 if the man hours necessary are made available for these tasks.

UPDATE TO “STATUS REPORT FOR COMPLIANCE WITH THE CITY OF EAST MOLINE’S PHASE II NPDES STORM WATER PERMIT”

January 15, 2008

As of December 14, 2007, the City had six (6) remaining Best Management Practices (BMP’s) to implement. The six (6) remaining BMP’s listed in the Status Report for Compliance with the City of East Moline’s Phase II NPDES Storm Water Permit, with a brief description, are outlined below:

1. A.3 Public Service Announcement -Post Educational on City’s Website
2. A.4 Community Event-Event Participation
3. B.7 Other Public Involvement -Storm Drain Stenciling
4. D.5 Public Information Handling Procedures -Website
5. E.3 Long Term O & M Procedures-A plan for long term maintenance
6. E.4 Pre-Construction Review of BMP Design-Develop Manual/Train Staff

As of January 14, 2008, the City has three (3) Best Management Practices remaining to implement. They are listed below:

1. B.7 Other Public Involvement -Storm Drain Stenciling
2. E.3 Long Term O & M Procedures –A plan for the long term maintenance
3. E.4 Pre-Construction Review of BMP Design-Develop Manual/Train Staff.

On the following pages is a plan to implement the remaining three (3) remaining BMP’s by February 29, 2008. This will allow the City of East Moline to comply with their General NPDES Permit for Discharges from Small Municipal Separate Storm Sewer Systems permit by the permit expiration date of February 29, 2008.

B.7 Other Public Involvement

Brief Description: *Storm Drain Stenciling*

Steps

1. Order and receive one (1) storm drain stencil from www.stencilease.com.
2. Also have on hand two (2) cans of blue inverted spray paint and one (1) wire brush.
3. A map outlining the inlet box outs to be stenciled. Targeting 13th Street from 5th Avenue to 13th Avenue.

On a sunny and dry day when the air temperature is between 40 degrees F and 80 degrees F, I will proceed along 13th Avenue from 5^h Avenue to 13th Avenue and stencil the box outs on both sides of the street. It would be a very good idea to have another City employee with me providing safety by watching the traffic and/or providing traffic control. This work can not be scheduled in advance because the City needs to take advantage of warm weather this time of year.

Time Line

Step	Targeted Completion Date
1.....	January 18, 2008
2.....	January 18, 2008
3.....	January 18, 2008

Estimated Cost

1. Stencil.....	\$15.00
2. Paint.....	10.00
3. Wire Brush.....	<u>5.00</u>
Total	\$30.00

E.3 Long Term O & M Procedure

Brief Description: *Plan for long term operation and maintenance of BMP's.*

Steps

1. Meet with the appropriate people (Tim, Bruce, Dave, Gary, Joseph and I) and determine a list of permanent BMP's (vs. temporary BMP's) requiring periodical operation and maintenance. This list will also include the type of BMP, location, and the intended function of the BMP.
2. Once a list has been compiled:
 - A. What BMP will be maintained.
 - B. Why the BMP will be maintained.
 - C. Who will maintain the BMP.
 - D. When will the BMP be maintained.
 - E. How the BMP will be maintained.
3. The last step is to put our list into report form for planning, scheduling and documentation purposes.

Time Line

Step	Targeted Completion Date
1.....	January 25, 2008
2.....	January 25, 2008
3.....	February 8, 2008

Estimated Cost

None

E.4 Pre-Construction Review of BMP Designs

Brief Description: *Develop and train staff on Post Construction BMP Manual*

Steps

1. Decide what the City's pollution control objectives are.
2. Determine which BMP's are best suited to meet the City's pollution control objectives.
3. Develop a manual (standards) as to when to use or design a particular BMP for a specific situation and location.
4. Once this manual has been developed, city staff and inspectors will be trained in how to use this manual during design, construction and long term operation of a particular BMP.

Time Line

Step	Targeted Completion Date
1.....	January 18, 2008
2.....	January 25, 2008
3.....	February 8, 2008
4.....	February 21, 2008

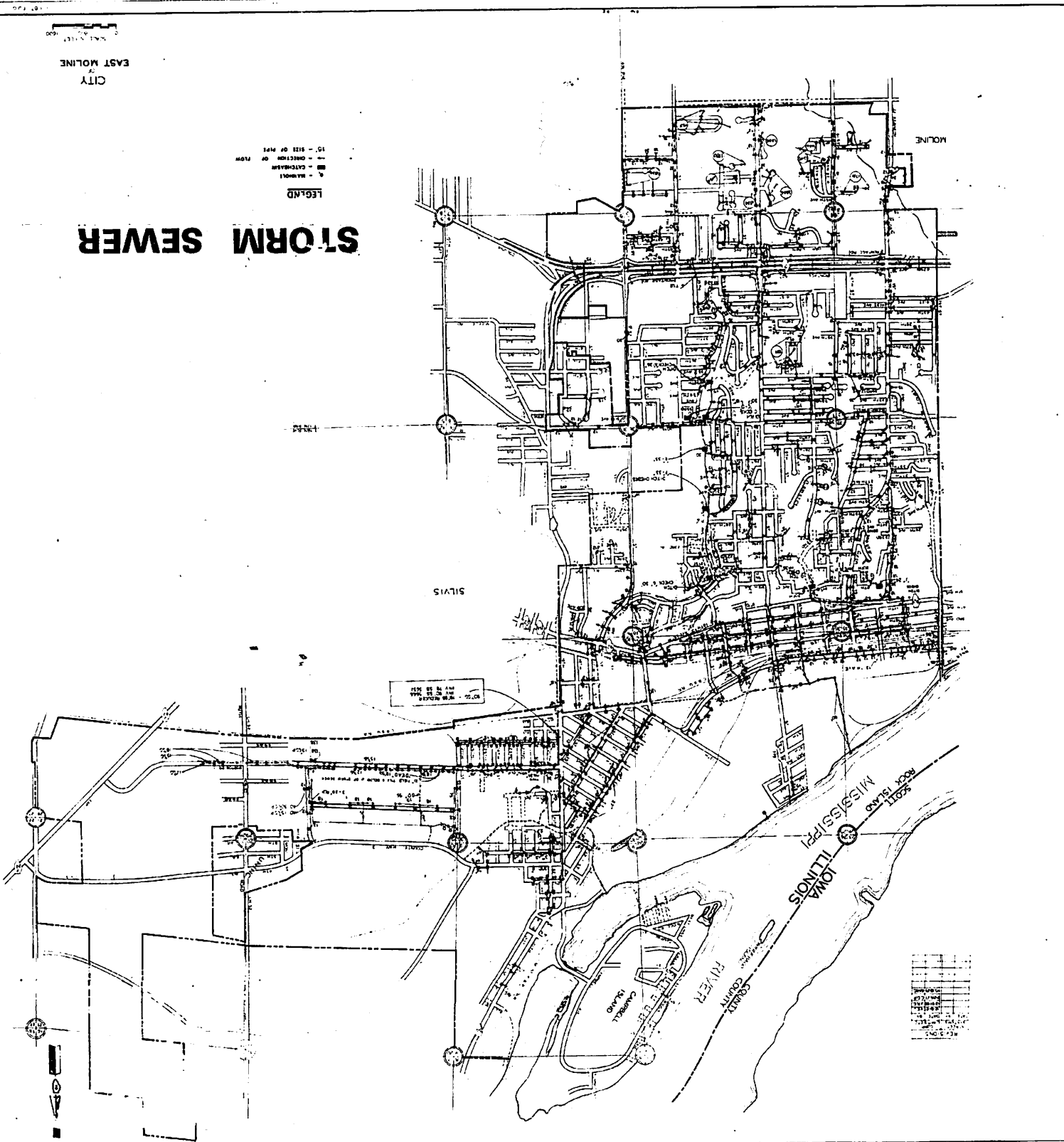
Estimated Cost

None

STORM SEWER

CITY
OF
EAST MOLINE

LEGEND
A - MANHOLE
B - CATCHBASIN
C - DIRECTION OF FLOW
D - SIZE OF PIPE



NO.	DESCRIPTION
1	18" DIA. PIPE
2	24" DIA. PIPE
3	30" DIA. PIPE
4	36" DIA. PIPE
5	42" DIA. PIPE
6	48" DIA. PIPE
7	54" DIA. PIPE
8	60" DIA. PIPE
9	66" DIA. PIPE
10	72" DIA. PIPE
11	78" DIA. PIPE
12	84" DIA. PIPE
13	90" DIA. PIPE
14	96" DIA. PIPE
15	102" DIA. PIPE
16	108" DIA. PIPE
17	114" DIA. PIPE
18	120" DIA. PIPE
19	126" DIA. PIPE
20	132" DIA. PIPE
21	138" DIA. PIPE
22	144" DIA. PIPE
23	150" DIA. PIPE
24	156" DIA. PIPE
25	162" DIA. PIPE
26	168" DIA. PIPE
27	174" DIA. PIPE
28	180" DIA. PIPE
29	186" DIA. PIPE
30	192" DIA. PIPE
31	198" DIA. PIPE
32	204" DIA. PIPE
33	210" DIA. PIPE
34	216" DIA. PIPE
35	222" DIA. PIPE
36	228" DIA. PIPE
37	234" DIA. PIPE
38	240" DIA. PIPE
39	246" DIA. PIPE
40	252" DIA. PIPE
41	258" DIA. PIPE
42	264" DIA. PIPE
43	270" DIA. PIPE
44	276" DIA. PIPE
45	282" DIA. PIPE
46	288" DIA. PIPE
47	294" DIA. PIPE
48	300" DIA. PIPE
49	306" DIA. PIPE
50	312" DIA. PIPE
51	318" DIA. PIPE
52	324" DIA. PIPE
53	330" DIA. PIPE
54	336" DIA. PIPE
55	342" DIA. PIPE
56	348" DIA. PIPE
57	354" DIA. PIPE
58	360" DIA. PIPE
59	366" DIA. PIPE
60	372" DIA. PIPE
61	378" DIA. PIPE
62	384" DIA. PIPE
63	390" DIA. PIPE
64	396" DIA. PIPE
65	402" DIA. PIPE
66	408" DIA. PIPE
67	414" DIA. PIPE
68	420" DIA. PIPE
69	426" DIA. PIPE
70	432" DIA. PIPE
71	438" DIA. PIPE
72	444" DIA. PIPE
73	450" DIA. PIPE
74	456" DIA. PIPE
75	462" DIA. PIPE
76	468" DIA. PIPE
77	474" DIA. PIPE
78	480" DIA. PIPE
79	486" DIA. PIPE
80	492" DIA. PIPE
81	498" DIA. PIPE
82	504" DIA. PIPE
83	510" DIA. PIPE
84	516" DIA. PIPE
85	522" DIA. PIPE
86	528" DIA. PIPE
87	534" DIA. PIPE
88	540" DIA. PIPE
89	546" DIA. PIPE
90	552" DIA. PIPE
91	558" DIA. PIPE
92	564" DIA. PIPE
93	570" DIA. PIPE
94	576" DIA. PIPE
95	582" DIA. PIPE
96	588" DIA. PIPE
97	594" DIA. PIPE
98	600" DIA. PIPE
99	606" DIA. PIPE
100	612" DIA. PIPE
101	618" DIA. PIPE
102	624" DIA. PIPE
103	630" DIA. PIPE
104	636" DIA. PIPE
105	642" DIA. PIPE
106	648" DIA. PIPE
107	654" DIA. PIPE
108	660" DIA. PIPE
109	666" DIA. PIPE
110	672" DIA. PIPE
111	678" DIA. PIPE
112	684" DIA. PIPE
113	690" DIA. PIPE
114	696" DIA. PIPE
115	702" DIA. PIPE
116	708" DIA. PIPE
117	714" DIA. PIPE
118	720" DIA. PIPE
119	726" DIA. PIPE
120	732" DIA. PIPE
121	738" DIA. PIPE
122	744" DIA. PIPE
123	750" DIA. PIPE
124	756" DIA. PIPE
125	762" DIA. PIPE
126	768" DIA. PIPE
127	774" DIA. PIPE
128	780" DIA. PIPE
129	786" DIA. PIPE
130	792" DIA. PIPE
131	798" DIA. PIPE
132	804" DIA. PIPE
133	810" DIA. PIPE
134	816" DIA. PIPE
135	822" DIA. PIPE
136	828" DIA. PIPE
137	834" DIA. PIPE
138	840" DIA. PIPE
139	846" DIA. PIPE
140	852" DIA. PIPE
141	858" DIA. PIPE
142	864" DIA. PIPE
143	870" DIA. PIPE
144	876" DIA. PIPE
145	882" DIA. PIPE
146	888" DIA. PIPE
147	894" DIA. PIPE
148	900" DIA. PIPE
149	906" DIA. PIPE
150	912" DIA. PIPE
151	918" DIA. PIPE
152	924" DIA. PIPE
153	930" DIA. PIPE
154	936" DIA. PIPE
155	942" DIA. PIPE
156	948" DIA. PIPE
157	954" DIA. PIPE
158	960" DIA. PIPE
159	966" DIA. PIPE
160	972" DIA. PIPE
161	978" DIA. PIPE
162	984" DIA. PIPE
163	990" DIA. PIPE
164	996" DIA. PIPE
165	1002" DIA. PIPE
166	1008" DIA. PIPE
167	1014" DIA. PIPE
168	1020" DIA. PIPE
169	1026" DIA. PIPE
170	1032" DIA. PIPE
171	1038" DIA. PIPE
172	1044" DIA. PIPE
173	1050" DIA. PIPE
174	1056" DIA. PIPE
175	1062" DIA. PIPE
176	1068" DIA. PIPE
177	1074" DIA. PIPE
178	1080" DIA. PIPE
179	1086" DIA. PIPE
180	1092" DIA. PIPE
181	1098" DIA. PIPE
182	1104" DIA. PIPE
183	1110" DIA. PIPE
184	1116" DIA. PIPE
185	1122" DIA. PIPE
186	1128" DIA. PIPE
187	1134" DIA. PIPE
188	1140" DIA. PIPE
189	1146" DIA. PIPE
190	1152" DIA. PIPE
191	1158" DIA. PIPE
192	1164" DIA. PIPE
193	1170" DIA. PIPE
194	1176" DIA. PIPE
195	1182" DIA. PIPE
196	1188" DIA. PIPE
197	1194" DIA. PIPE
198	1200" DIA. PIPE
199	1206" DIA. PIPE
200	1212" DIA. PIPE
201	1218" DIA. PIPE
202	1224" DIA. PIPE
203	1230" DIA. PIPE
204	1236" DIA. PIPE
205	1242" DIA. PIPE
206	1248" DIA. PIPE
207	1254" DIA. PIPE
208	1260" DIA. PIPE
209	1266" DIA. PIPE
210	1272" DIA. PIPE
211	1278" DIA. PIPE
212	1284" DIA. PIPE
213	1290" DIA. PIPE
214	1296" DIA. PIPE
215	1302" DIA. PIPE
216	1308" DIA. PIPE
217	1314" DIA. PIPE
218	1320" DIA. PIPE
219	1326" DIA. PIPE
220	1332" DIA. PIPE
221	1338" DIA. PIPE
222	1344" DIA. PIPE
223	1350" DIA. PIPE
224	1356" DIA. PIPE
225	1362" DIA. PIPE
226	1368" DIA. PIPE
227	1374" DIA. PIPE
228	1380" DIA. PIPE
229	1386" DIA. PIPE
230	1392" DIA. PIPE
231	1398" DIA. PIPE
232	1404" DIA. PIPE
233	1410" DIA. PIPE
234	1416" DIA. PIPE
235	1422" DIA. PIPE
236	1428" DIA. PIPE
237	1434" DIA. PIPE
238	1440" DIA. PIPE
239	1446" DIA. PIPE
240	1452" DIA. PIPE
241	1458" DIA. PIPE
242	1464" DIA. PIPE
243	1470" DIA. PIPE
244	1476" DIA. PIPE
245	1482" DIA. PIPE
246	1488" DIA. PIPE
247	1494" DIA. PIPE
248	1500" DIA. PIPE
249	1506" DIA. PIPE
250	1512" DIA. PIPE
251	1518" DIA. PIPE
252	1524" DIA. PIPE
253	1530" DIA. PIPE
254	1536" DIA. PIPE
255	1542" DIA. PIPE
256	1548" DIA. PIPE
257	1554" DIA. PIPE
258	1560" DIA. PIPE
259	1566" DIA. PIPE
260	1572" DIA. PIPE
261	1578" DIA. PIPE
262	1584" DIA. PIPE
263	1590" DIA. PIPE
264	1596" DIA. PIPE
265	1602" DIA. PIPE
266	1608" DIA. PIPE
267	1614" DIA. PIPE
268	1620" DIA. PIPE
269	1626" DIA. PIPE
270	1632" DIA. PIPE
271	1638" DIA. PIPE
272	1644" DIA. PIPE
273	1650" DIA. PIPE
274	1656" DIA. PIPE
275	1662" DIA. PIPE
276	1668" DIA. PIPE
277	1674" DIA. PIPE
278	1680" DIA. PIPE
279	1686" DIA. PIPE
280	1692" DIA. PIPE
281	1698" DIA. PIPE
282	1704" DIA. PIPE
283	1710" DIA. PIPE
284	1716" DIA. PIPE
285	1722" DIA. PIPE
286	1728" DIA. PIPE
287	1734" DIA. PIPE
288	1740" DIA. PIPE
289	1746" DIA. PIPE
290	1752" DIA. PIPE
291	1758" DIA. PIPE
292	1764" DIA. PIPE
293	1770" DIA. PIPE
294	1776" DIA. PIPE
295	1782" DIA. PIPE
296	1788" DIA. PIPE
297	1794" DIA. PIPE
298	1800" DIA. PIPE
299	1806" DIA. PIPE
300	1812" DIA. PIPE
301	1818" DIA. PIPE
302	1824" DIA. PIPE
303	1830" DIA. PIPE
304	1836" DIA. PIPE
305	1842" DIA. PIPE
306	1848" DIA. PIPE
307	1854" DIA. PIPE
308	1860" DIA. PIPE
309	1866" DIA. PIPE
310	1872" DIA. PIPE
311	1878" DIA. PIPE
312	1884" DIA. PIPE
313	1890" DIA. PIPE
314	1896" DIA. PIPE
315	1902" DIA. PIPE
316	1908" DIA. PIPE
317	1914" DIA. PIPE
318	1920" DIA. PIPE
319	1926" DIA. PIPE
320	1932" DIA. PIPE
321	1938" DIA. PIPE
322	1944" DIA. PIPE
323	1950" DIA. PIPE
324	1956" DIA. PIPE
325	1962" DIA. PIPE
326	1968" DIA. PIPE
327	1974" DIA. PIPE
328	1980" DIA. PIPE
329	1986" DIA. PIPE
330	1992" DIA. PIPE
331	1998" DIA. PIPE
332	2004" DIA. PIPE
333	2010" DIA. PIPE
334	2016" DIA. PIPE
335	2022" DIA. PIPE
336	2028" DIA. PIPE
337	2034" DIA. PIPE
338	2040" DIA. PIPE
339	2046" DIA. PIPE
340	2052" DIA. PIPE
341	2058" DIA. PIPE
342	2064" DIA. PIPE
343	2070" DIA. PIPE
344	2076" DIA. PIPE
345	2082" DIA. PIPE
346	2088" DIA. PIPE
347	2094" DIA. PIPE
348	2100" DIA. PIPE
349	2106" DIA. PIPE
350	2112" DIA. PIPE
351	2118" DIA. PIPE
352	2124" DIA. PIPE
353	2130" DIA. PIPE
354	2136" DIA. PIPE
355	2142" DIA. PIPE
356	2148" DIA. PIPE
357	2154" DIA. PIPE
358	2160" DIA. PIPE
359	2166" DIA. PIPE
360	2172" DIA. PIPE
361	2178" DIA. PIPE
362	2184" DIA. PIPE
363	2190" DIA. PIPE
364	2196" DIA. PIPE
365	2202" DIA. PIPE
366	2208" DIA. PIPE
367	2214" DIA. PIPE
368	2220" DIA. PIPE
369	2226" DIA. PIPE
370	2232" DIA. PIPE
371	2238" DIA. PIPE
372	2244" DIA. PIPE
373	2250" DIA. PIPE
374	2256" DIA. PIPE
375	2262" DIA. PIPE
376	2268" DIA. PIPE
377	2274" DIA. PIPE
378	2280" DIA. PIPE
379	2286" DIA. PIPE
380	2292" DIA. PIPE
381	2298" DIA. PIPE
382	2304" DIA. PIPE
383	2310" DIA. PIPE
384	2316" DIA. PIPE
385	2322" DIA. PIPE
386	2328" DIA. PIPE
387	2334" DIA. PIPE
388	2340" DIA. PIPE
389	2346" DIA. PIPE
390	2352" DIA. PIPE
391	2358" DIA. PIPE
392	2364" DIA. PIPE
393	2370" DIA. PIPE
394	2376" DIA. PIPE
395	2382" DIA. PIPE
396	2388" DIA. PIPE
397	2394" DIA. PIPE
398	2400" DIA. PIPE
399	2406" DIA. PIPE
400	2412" DIA. PIPE
401	2418" DIA. PIPE
402	2424" DIA. PIPE
403	2430" DIA. PIPE
404	2436" DIA. PIPE
405	2442" DIA. PIPE
406	2448" DIA. PIPE
407	2454" DIA. PIPE
408	2460" DIA. PIPE
409	2466" DIA. PIPE
410	2472" DIA. PIPE
411	2478" DIA. PIPE
412	2484" DIA. PIPE
413	2490" DIA. PIPE
414	2496" DIA. PIPE
415	2502" DIA. PIPE
416	2508" DIA. PIPE
417	2514" DIA. PIPE
418	2520" DIA. PIPE
419	2526" DIA. PIPE
420	2532" DIA. PIPE
421	2538" DIA. PIPE
422	2544" DIA. PIPE
423	2550" DIA. PIPE
424	2556" DIA. PIPE
425	2562" DIA. PIPE
426	2568" DIA. PIPE
427	2574" DIA. PIPE
428	2580" DIA. PIPE
429	2586" DIA. PIPE
430	2592" DIA. PIPE
431	2598" DIA. PIPE
432	2604" DIA. PIPE
433	2610" DIA. PIPE
434	2616" DIA. PIPE
435	2622" DIA. PIPE
436	2628" DIA. PIPE
437	2634" DIA. PIPE
438	2640" DIA. PIPE
439	2646" DIA. PIPE
440	2652" DIA. PIPE
441	2658" DIA. PIPE
442	2664" DIA. PIPE
443	2670" DIA. PIPE
444	2676" DIA. PIPE
445	2682" DIA. PIPE
446	2688" DIA. PIPE
447	2694" DIA. PIPE
448	2700" DIA. PIPE
449	2706" DIA. PIPE
450	2712" DIA. PIPE
451	2718" DIA. PIPE
452	2724" DIA. PIPE
453	2730" DIA. PIPE
454	2736" DIA. PIPE
455	2742" DIA. PIPE
456	2748" DIA. PIPE
457	2754" DIA. PIPE
458	2760" DIA. PIPE
459	2766" DIA. PIPE
460	2772" DIA. PIPE
461	2778" DIA. PIPE
462	2784" DIA. PIPE
463	2790" DIA. PIPE
464	2796" DIA. PIPE
465	2802" DIA. PIPE
466	2808" DIA. PIPE
467	2814" DIA. PIPE
468	2820" DIA. PIPE
469	2826" DIA. PIPE
470	2832" DIA. PIPE
471	2838" DIA. PIPE
472	2844" DIA. PIPE
473	2850" DIA. PIPE
474	2856" DIA. PIPE
475	2862" DIA. PIPE
476	2868" DIA. PIPE
477	2874" DIA. PIPE
478	2880" DIA. PIPE
479	2886" DIA. PIPE
480	2892" DIA. PIPE
481	2898" DIA. PIPE
482	2904" DIA. PIPE
483	2910" DIA. PIPE
484	2916" DIA. PIPE
485	2922" DIA. PIPE
486	2928" DIA. PIPE
487	2934" DIA. PIPE
488	2940" DIA. PIPE
489	2946" DIA. PIPE
490	2952" DIA. PIPE
491	2958" DIA. PIPE
492	

Community Cleanups					
	East Moline Volunteers	(%)	Total Volunteers Registered	Total Volunteers Signed-In	Sites
2004					
1 Downtown Cleanup	26		27		7
2 Watertown Cleanup	30		10		1
3 Xstream Cleanup	13	30	43	N/A	5
2005					
1 Downtown Cleanup	20		23		6
2 Watertown Cleanup	32		10		1
3 Xstream Cleanup	10	40	25	N/A	4
2006					
1 Downtown Cleanup	18		20		
2 Watertown Cleanup	33		8		
3 Xstream Cleanup	22	22	100	71	12
2007					
1 Downtown Cleanup	15		16		5
2 Watertown Cleanup	35		9		1
3 Xstream Cleanup	22	22	100	75	19