

City of East Moline
Annual Facility Inspection Report for NPDES Permit
For Storm Water Discharges from MS4
NPDES Permit No. ILR400330
Report Period: From March 2011 to March 2012



Illinois Environmental Protection Agency

Bureau of Water • 1021 N. Grand Avenue E. • P.O. Box 19276 • Springfield • Illinois • 62794-9276

Division of Water Pollution Control ANNUAL FACILITY INSPECTION REPORT

for NPDES Permit for Storm Water Discharges from Separate Storm Sewer Systems (MS4)

This fillable form may be completed online, a copy saved locally, printed and signed before it is submitted to the Compliance Assurance Section at the above address. Complete each section of this report.

Report Period: From March, 2011 To March, 2012

Permit No. ILR40 0330

MS4 OPERATOR INFORMATION: (As it appears on the current permit)

Name: City of East Moline Mailing Address 1: 912 16th Avenue
Mailing Address 2: 1200 13th Avenue County: Rock Island
City: East Moline State: IL Zip: 61244 Telephone: 309-751-2310
Contact Person: Donald F. Mayhew II, P.E. Email Address: dmayhew13817@gmail.com
(Person responsible for Annual Report)

Name(s) of governmental entity(ies) in which MS4 is located: (As it appears on the current permit)

City of East Moline

THE FOLLOWING ITEMS MUST BE ADDRESSED.

A. Changes to best management practices (check appropriate BMP change(s) and attach information regarding change(s) to BMP and measurable goals.)

- | | | | |
|--|--------------------------|---|--------------------------|
| 1. Public Education and Outreach | <input type="checkbox"/> | 4. Construction Site Runoff Control | <input type="checkbox"/> |
| 2. Public Participation/Involvement | <input type="checkbox"/> | 5. Post-Construction Runoff Control | <input type="checkbox"/> |
| 3. Illicit Discharge Detection & Elimination | <input type="checkbox"/> | 6. Pollution Prevention/Good Housekeeping | <input type="checkbox"/> |

B. Attach the status of compliance with permit conditions, an assessment of the appropriateness of your identified best management practices and progress towards achieving the statutory goal of reducing the discharge of pollutants to the MEP, and your identified measurable goals for each of the minimum control measures.

C. Attach results of information collected and analyzed, including monitoring data, if any during the reporting period.

D. Attach a summary of the storm water activities you plan to undertake during the next reporting cycle (including an implementation schedule.)

E. Attach notice that you are relying on another government entity to satisfy some of your permit obligations (if applicable).

F. Attach a list of construction projects that your entity has paid for during the reporting period.

Any person who knowingly makes a false, fictitious, or fraudulent material statement, orally or in writing, to the Illinois EPA commits a Class 4 felony. A second or subsequent offense after conviction is a Class 3 felony. (415 ILCS 5/44(h))

Owner Signature: _____

Joseph B. Miller

Printed Name: _____

Date: _____

Acting Director of Engi_____

Title: _____

EMAIL COMPLETED FORM TO: epa.ms4annualinsp@illinois.gov

or Mail to: ILLINOIS ENVIRONMENTAL PROTECTION AGENCY
WATER POLLUTION CONTROL
COMPLIANCE ASSURANCE SECTION #19
1021 NORTH GRAND AVENUE EAST
POST OFFICE BOX 19276
SPRINGFIELD, ILLINOIS 62794-9276

A.Changes to BMPs (best management practices) and Measurable Goals

A. Public Education and Outreach

1. Distribute Paper Material
2. Speaking Engagement

3. Public Service Announcement

BMP: Post Educational Material on the City's website

Measurable Goals including frequencies-Date and Number of Web hits

4. Community Event

BMP: Event Participation-Bald Eagle Days or Earth Day

Measurable Goals including frequencies-The number and dates attended

5. Classroom Education
6. Other Public Education

B. Public Participation

1. Public Panel

2. Educational Volunteer

BMP: Community cleanups along local waterways

Measurable Goals including frequencies-The percentage of the community participating and the number of cleanups per year.

3. Stakeholder Meeting

4. Public Hearing

5. Volunteer Monitoring

6. Program Involvement

7. Other Public Involvement

BMP: Storm Drain Stenciling

Measurable Goals including frequencies-The number and date drains stenciled. The number of volunteers per date of stenciling.

C. Illicit Discharge Detection and Elimination

1. Sewer Map Preparation

BMP: Storm Sewer System Map

Measurable Goals including frequencies-The number of feet of storm sewer shown on the map. The number of outfalls detected.

2. Regulatory Control Program

BMP: Illicit Discharge Ordinance

Measurable Goals including frequencies-1. Review and update ordinance. 2. Publicize the ordinance and the changes. 3. Develop and implement enforcement procedures.

3. Detection/Elimination Prioritization Plan

4. Illicit Discharge Tracing Procedures

5. Illicit Source Removal Procedures

6. Program Evaluation and Assessment

A. Changes to BMPs (best management practices) and Measurable Goals

7. Visual Dry Weather Screening

BMP: Detect and address dry-weather flow

Measurable Goals including frequencies-1. Date and identify storm water outfalls. 2.

Eliminate contaminated dry-weather discharges to the storm sewer conveyance system with dates and completed.

8. Pollutant Field Testing

9. Public Notification

10. Other Illicit Discharge Controls

BMP: Promote household Hazardous waste disposal

Measurable Goals including frequencies-Residents of East Moline can take their household hazardous waste to the Waste Commission of Scott County for disposal. The Waste

Commission keeps a record of East Moline residents, by year, that use their service. In turn, the Waste Commission emails the City of East Moline's engineering department this data.

The engineering department stores this data for future use. Handouts have been distributed in the past. In the future, the City will post this available free service on it's website.

D. Construction Site Runoff Control

1. Regulatory Control Program

BMP: Storm Water Control Ordinance

Measurable Goals including frequencies-The date the ordinance was approved by the City.

2. Erosion and Sediment Control BMPs

3. Other Waste Control Program

4. Site Plan Review Procedures

BMP: Procedures for review of construction site plans

Measurable Goals including frequencies-1. Develop checklist for construction site plan review. 2. Document construction site plans reviewed.

5. Public Information Handling Procedure

BMP: Procedures for public to submit information. Report a Problem Page on the City's website

Measurable Goals including frequencies-The number of phone messages and/or emails submitted by the public.

6. Site Inspection/Enforcement Procedure

BMP: Procedures for construction site inspection

Measurable Goals including frequencies-1. Develop Inspector certification program and training. 2. Implement the certification program.

E. Post Construction Runoff Control

1. Community Control Strategy

2. Regulatory Control Program

BMP: Post Construction Ordinance

Measurable Goals including frequencies-Determine if an ordinance was developed to address post-construction run-off. 2. The projected amount of impervious cover reduced under the

A. Changes to BMPs (best management practices) and Measurable Goals

- new ordinance. 3. The number of enforcement actions that occur because of the new ordinance.*
3. **Long Term O&M Procedures**
BMP: A plan for the long-term operation and maintenance of BMPs by developing and training staff on Post Construction BMP Manual.
Measurable Goals including frequencies-The development and implementation of an operation and maintenance schedule for BMPs.
 4. **Pre-Construction Review of BMP Designs**
BMP: Develop and train staff on Post Construction BMP Manual
Measurable Goals including frequencies-1. Provide approved BMPs to meet the City's pollution control objectives. 2. Provide training to properly design and review plans for post construction controls.
 5. Site Inspection During Construction
 6. Post-Construction Inspections
 7. Other Post-Construction Runoff Controls

F. Pollution Prevention/Good Housekeeping

1. Employee Training Program
2. Inspection and Maintenance Program
3. Municipal Operations Storm Water Control
4. Municipal Operations Waste Disposal
5. Flood Management/Assess Guidelines
6. **Other Municipal Operations Controls**
BMP: Reduce and eliminate the discharge of pollutants
Measurable Goals including frequencies- Review existing programs and the practice in place.

*Active BMPs are in red.

These BMPs and Measurably Goals have been the same from March 2003 to April 2018.

B. 1. Status of Compliance with Permit Conditions: 2. An assessment of the appropriateness of your identified best management practices and progress towards achieving the statutory goal of reducing the discharge of pollutants to the MEP (maximum extent possible): 3. Your identified measurable goals for each of the minimum control measures:

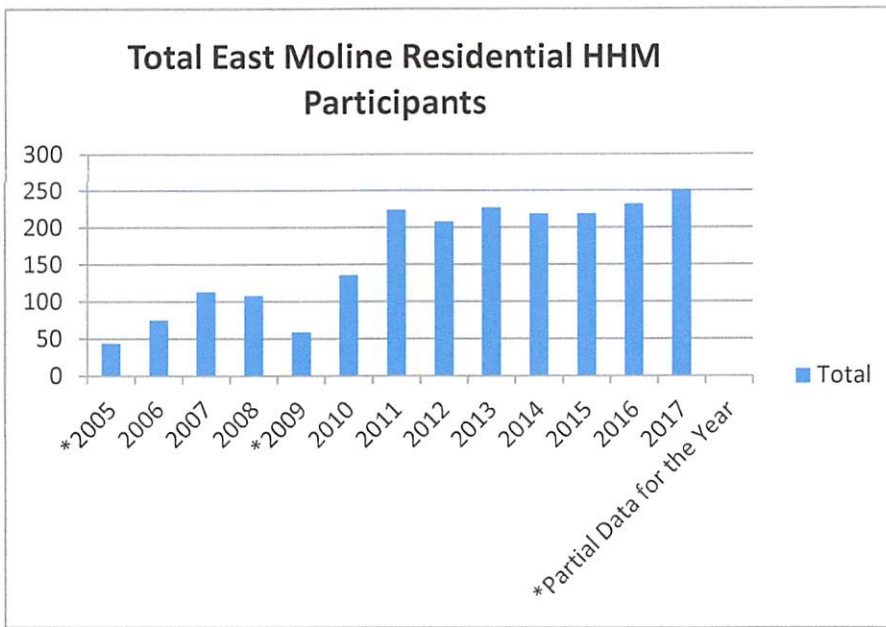
From March of 2003 to January 2018, the City of East Moline thought they had **generally** complied with their NPDES permit in as so what the NPDES permit was trying to achieve. Upon further thorough examination of their NPDES permit, the City of East Moline **did realize** that they needed to alter three main items:

1. Improve their filing system. This includes (this is the main item) making the files easily accessible by others.
2. Changes to the City of East Moline's selected BMPs and measurable goals.
3. Filing past annual reports

**C. Yearly Totals of East Moline Residential HHM Participants
2005-2017**

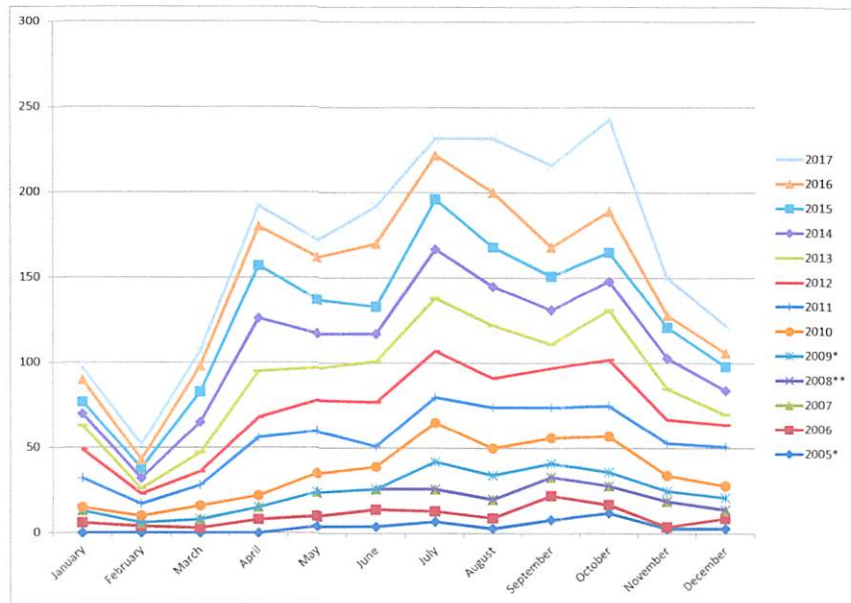
| Year | Total |
|-------|-------|
| *2005 | 44 |
| 2006 | 75 |
| 2007 | 113 |
| 2008 | 108 |
| *2009 | 59 |
| 2010 | 136 |
| 2011 | 224 |
| 2012 | 208 |
| 2013 | 227 |
| 2014 | 219 |
| 2015 | 219 |
| 2016 | 232 |
| 2017 | 251 |

*Partial Data for the
Year



**C. Yearly Totals of East Moline Residential HHM Participants
2005-2017**

| | 2005* | 2006 | 2007 | 2008** | 2009* | 2010 | 2011 | 2012 | 2013 | 2014 | *Partial year **Year end report used, no monthly breakdowns available |
|---------------|------------|------------|------------|------------|-----------|------------|------------|------------|------------|------------|---|
| January | N/A | 6 | 7 | | N/A | 2 | 17 | 17 | 14 | 7 | |
| February | N/A | 4 | 2 | | N/A | 4 | 7 | 6 | 3 | 6 | |
| March | N/A | 3 | 5 | | N/A | 8 | 12 | 8 | 11 | 18 | |
| April | N/A | 8 | 7 | | N/A | 7 | 34 | 12 | 27 | 31 | |
| May | 4 | 6 | 14 | | N/A | 11 | 25 | 18 | 19 | 20 | |
| June | 4 | 10 | 12 | | N/A | 13 | 12 | 26 | 24 | 16 | |
| July | 7 | 6 | 13 | | 16 | 23 | 15 | 27 | 31 | 29 | |
| August | 3 | 6 | 11 | | 14 | 16 | 24 | 17 | 31 | 23 | |
| September | 8 | 14 | 11 | | 8 | 15 | 18 | 23 | 14 | 20 | |
| October | 12 | 5 | 11 | | 8 | 21 | 18 | 27 | 29 | 17 | |
| November | 3 | 1 | 15 | | 6 | 9 | 19 | 14 | 18 | 18 | |
| December | 3 | 6 | 5 | | 7 | 7 | 23 | 13 | 6 | 14 | |
| TOTALS | 44 | 75 | 113 | 108 | 59 | 136 | 224 | 208 | 227 | 219 | |
| | | | | | | | | | | | |
| | 2015 | 2016 | 2017 | 2018 | 2019 | 2020 | 2021 | 2022 | 2023 | 2024 | |
| January | 7 | 13 | 7 | | | | | | | | |
| February | 6 | 5 | 9 | | | | | | | | |
| March | 18 | 15 | 9 | | | | | | | | |
| April | 31 | 23 | 12 | | | | | | | | |
| May | 20 | 25 | 10 | | | | | | | | |
| June | 16 | 37 | 22 | | | | | | | | |
| July | 29 | 26 | 10 | | | | | | | | |
| August | 23 | 32 | 32 | | | | | | | | |
| September | 20 | 17 | 48 | | | | | | | | |
| October | 17 | 24 | 54 | | | | | | | | |
| November | 18 | 7 | 22 | | | | | | | | |
| December | 14 | 8 | 16 | | | | | | | | |
| TOTALS | 219 | 232 | 251 | 0 | 0 | 0 | 0 | 0 | 0 | 0 | |



**D. Summary of Storm Water Activities the City of East Moline
undertook in the reporting year**

E. Notice

The City of East Moline is not relying on another government entity to satisfy some of its permit obligations.

F. 2011 Construction Projects

- | | |
|--|--|
| <ul style="list-style-type: none"> 001-2011 18th Ave Storm Sewer Design (ref 007-2013) 002-2011 City Wide Sign Inventory - Retroreflectivity Stds 003-2011 14th Street & 23rd Avenue Ct Improvements 004-2011 10th Street Improvements (21st - 24th Ave) 005-2011 5th Street Improvements (25th - 30th Ave) 006-2011 Lift Station Renovations 007-2011 Wastewater Treatment Plant Improvements 008-2011 IKE Grant Application 009-2011 Bridge Inspections 2011 010-2011 Avenue of Cities Frontage Roads (IDOT) 011-2011 Lot 1 Pittman's 2nd Addn 012-2011 USEPA Sewer Information Request 013-2011 Kennedy Drive Improvements 014-2011 Street & Alley Improvements 015-2011 River Eagle Development (See 002-2013) 016-2011 New IDOT 017-2011 Downtow 018-2011 EDA Gran 019-2011 Demo 1515-1521-1525 7th Street 020-2011 Abbitts Park Addition RePlat 021-2011 Aldridge Early Learning Center Bldg Addn 022-2011 KDL Fiber Optic IL Rte 5 023-2011 Kings Farm 5th Addn 024-2011 Sewer Slip Lining Program 025-2011 Traffic Signal Claim - AOTC at 11th St 026-2011 Community Health Care Clinic 027-2011 Deere Harvester South Parking Improvements 028-2011 Service Steel Addn 2011 029-2011 EM Library Inspection | <ul style="list-style-type: none"> 030-2011 3026-10th Street Soil Borings 031-2011 Manhole Replacement Program 032-2011 Annex Roof 034-2011 KVF Quad Transformer 035-2011 EMIP Ditch Cleaning SEP 036-2011 Landfill Enviromental Services Contract 037-2011 Engineering and Maintenance Facility ADA Compliance 038-2011 Legion Hill Landscape Plan 039-2011 10th St Utility Easment - Old Storage Tank Site 040-2011 City Hall Sidewalk Replacement 041-2011 Hometown Harbor Drainage Inspection 042-2011 New Rock River FIRM Mapping 043-2011 Frontier Fiber-Optic 172St-IL5 044-2011 UTHS Plat 2011 Earth Week request for information to close out old projects t for Storm Water for IEPA pictures from dons phone COW-Council Driveway Inspections Driveway Inspections by DFM Photos Trip and Fall Saint Mary's x-Project Frost x-Resident Issues Manila folder tab stickers 2011 Project Numbering Directory 2011 |
|--|--|

Type: File folder
 Date modified: 9/20/2014 10:11 PM
 Size: 85.8 MB
 Folders: Doc, Dwg, Images, PDF, Permits, Preliminary Plat