

City of East Moline
Annual Facility Inspection Report for NPDES Permit
For Storm Water Discharges from MS4
NPDES Permit No. ILR400330
Report Period: From March 2017 to March 2018



Illinois Environmental Protection Agency

Bureau of Water • 1021 N. Grand Avenue E. • P.O. Box 19276 • Springfield • Illinois • 62794-9276

Division of Water Pollution Control ANNUAL FACILITY INSPECTION REPORT

for NPDES Permit for Storm Water Discharges from Separate Storm Sewer Systems (MS4)

This fillable form may be completed online, a copy saved locally, printed and signed before it is submitted to the Compliance Assurance Section at the above address. Complete each section of this report.

Report Period: From March, 2017 To March, 2018

Permit No. ILR40 0330

MS4 OPERATOR INFORMATION: (As it appears on the current permit)

Name: City of East Moline Mailing Address 1: 912 16th Avenue
Mailing Address 2: 1200 13th Avenue County: Rock Island
City: East Moline State: IL Zip: 61244 Telephone: 309-751-2310
Contact Person: Donald F. Mayhew II, P.E. Email Address: dmayhew13817@gmail.com
(Person responsible for Annual Report)

Name(s) of governmental entity(ies) in which MS4 is located: (As it appears on the current permit)

City of East Moline

THE FOLLOWING ITEMS MUST BE ADDRESSED.

A. Changes to best management practices (check appropriate BMP change(s) and attach information regarding change(s) to BMP and measurable goals.)

- | | | | |
|----------------------------------------------|--------------------------|-------------------------------------------|--------------------------|
| 1. Public Education and Outreach | <input type="checkbox"/> | 4. Construction Site Runoff Control | <input type="checkbox"/> |
| 2. Public Participation/Involvement | <input type="checkbox"/> | 5. Post-Construction Runoff Control | <input type="checkbox"/> |
| 3. Illicit Discharge Detection & Elimination | <input type="checkbox"/> | 6. Pollution Prevention/Good Housekeeping | <input type="checkbox"/> |

B. Attach the status of compliance with permit conditions, an assessment of the appropriateness of your identified best management practices and progress towards achieving the statutory goal of reducing the discharge of pollutants to the MEP, and your identified measurable goals for each of the minimum control measures.

C. Attach results of information collected and analyzed, including monitoring data, if any during the reporting period.

D. Attach a summary of the storm water activities you plan to undertake during the next reporting cycle (including an implementation schedule.)

E. Attach notice that you are relying on another government entity to satisfy some of your permit obligations (if applicable).

F. Attach a list of construction projects that your entity has paid for during the reporting period.

Any person who knowingly makes a false, fictitious, or fraudulent material statement, orally or in writing, to the Illinois EPA commits a Class 4 felony. A second or subsequent offense after conviction is a Class 3 felony. (415 ILCS 5/44(h))

Owner Signature: _____

Joseph B. Miller

Printed Name: _____

Date: _____

Acting Director of Engi_____

Title: _____

EMAIL COMPLETED FORM TO: epa.ms4annualinsp@illinois.gov

or Mail to: ILLINOIS ENVIRONMENTAL PROTECTION AGENCY
WATER POLLUTION CONTROL
COMPLIANCE ASSURANCE SECTION #19
1021 NORTH GRAND AVENUE EAST
POST OFFICE BOX 19276
SPRINGFIELD, ILLINOIS 62794-9276

A.Changes to BMPs (best management practices) and measurable goals

A. Public Education and Outreach

1. Distribute Paper Material
2. Speaking Engagement
3. Public Service Announcement

BMP: Post Educational Material on the City's website

Measurable Goals including frequencies-Date and Number of Web hits

4. Community Event-substitute 1 above by putting flyers in the water bills.
5. Classroom Education
6. Other Public Education

B. Public Participation

1. Public Panel
2. Educational Volunteer

BMP: Community cleanups in the City

Measurable Goals including frequencies-The percentage of the community participating and the number of cleanups per year.

3. Stakeholder Meeting
4. Public Hearing
5. Volunteer Monitoring
6. Program Involvement
7. Other Public Involvement

BMP: Storm Drain Stenciling

Measurable Goals including frequencies-The number and date drains stenciled. The number of volunteers per date of stenciling.

C. Illicit Discharge Detection and Elimination

1. Sewer Map Preparation

BMP: Storm Sewer System Map

Measurable Goals including frequencies-The number of feet of storm sewer shown on the map. The number of outfalls detected.

2. Regulatory Control Program-substitute 6 below.
3. Detection/Elimination Prioritization Plan
4. Illicit Discharge Tracing Procedures
5. Illicit Source Removal Procedures
6. Program Evaluation and Assessment
7. Visual Dry Weather Screening

BMP: Detect and address dry-weather flow

Measurable Goals including frequencies-1. Date and identify storm water outfalls. 2. Eliminate contaminated dry-weather discharges to the storm sewer conveyance system with dates and completed.

8. Pollutant Field Testing
9. Public Notification
10. Other Illicit Discharge Controls (See Section C of this report)

BMP: Promote household Hazardous waste disposal

Measurable Goals including frequencies-Residents of East Moline can take their household hazardous waste to the Waste Commission of Scott County for disposal. The Waste Commission keeps a record of East Moline residents, by year, that use their service. In turn, the Waste Commission emails the City of East Moline's engineering department this data. The engineering department stores this data for future use. Handouts have been distributed in the past.

D. Construction Site Runoff Control

1. Regulatory Control Program

BMP: Storm Water Control Ordinance

Measurable Goals including frequencies-The date the ordinance was approved by the City.

2. Erosion and Sediment Control BMPs
3. Other Waste Control Program
4. Site Plan Review Procedures

BMP: Procedures for review of construction site plans

Measurable Goals including frequencies-1. Develop checklist for construction site plan review. 2. Document construction site plans reviewed.

5. Public Information Handling Procedure

BMP: Procedures for public to submit information. Report a Problem Page on the City's website

Measurable Goals including frequencies-The number of phone messages and/or emails submitted by the public.

6. Site Inspection/Enforcement Procedure

BMP: Procedures for construction site inspection

Measurable Goals including frequencies-1. Develop an inspector checklist for construction projects.

E. Post Construction Runoff Control

1. Community Control Strategy
2. Regulatory Control Program-substitute 5 below.
3. Long Term O&M Procedures-substitute 6 below.
4. Pre-Construction Review of BMP Designs-substitute 7 below.
5. Site Inspection During Construction
6. Post-Construction Inspections
7. Other Post-Construction Runoff Controls

F. Pollution Prevention/Good Housekeeping

1. Employee Training Program
2. Inspection and Maintenance Program
3. Municipal Operations Storm Water Control
4. Municipal Operations Waste Disposal
5. Flood Management/Assess Guidelines
6. Other Municipal Operations Controls

BMP: Reduce and eliminate the discharge of pollutants

Measurable Goals including frequencies- Review existing programs and the practice in place.

B. 1. Status of Compliance with Permit Conditions: 2. An assessment of the appropriateness of your identified best management practices and progress towards achieving the statutory goal of reducing the discharge of pollutants to the MEP (maximum extent possible): 3. Your identified measurable goals for each of the minimum control measures:

The City received a Non-Compliance Advisory letter from the Illinois Environmental Protection Agency, dated December 27, 2017 based on an announced inspection on July 20, 2017. I have attached these 5 items to Section B. of this report 1. IEPA's Non-Compliance Advisory Letter; 2. IEPA's Inspection Report; 3. The City of East Moline's Response Letter; 4. IEPA's Acceptance of Response to Non-Compliance Advisory Letter and 5. 2014 NPDES Permit Renewal BMP which have been implemented or are proposed to be Implemented in the MS4 area of the City of East Moline.

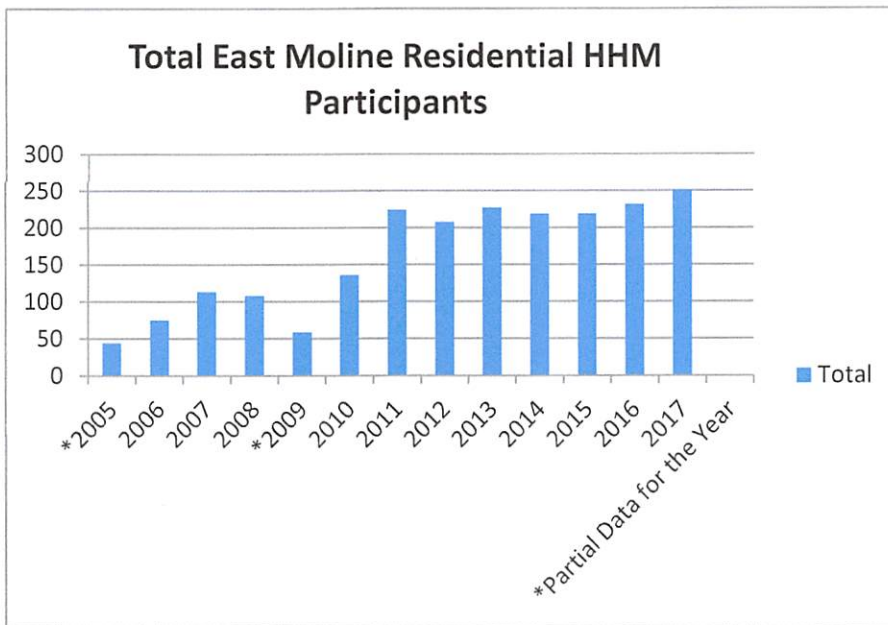
The City of East Moline did a complete review of its NPDES Permit and determined the following changes need to be done ASAP:

1. Substitution of current BMPs as stated in item 3 attached. The current BMPs are contained in attachment 5-25% completed
2. Compile a central file of NPDES related documents in order readily find needed documents/doing a better job of file keeping-50% completed.
3. Provide education to employees of the City of East Moline regarding what is storm water pollution as outlined in our current NPDES permit-25% completed.
4. Partner with volunteer organizations to help ease the work load. See section D.

**C. Yearly Totals of East Moline Residential HHM Participants
2005-2017**

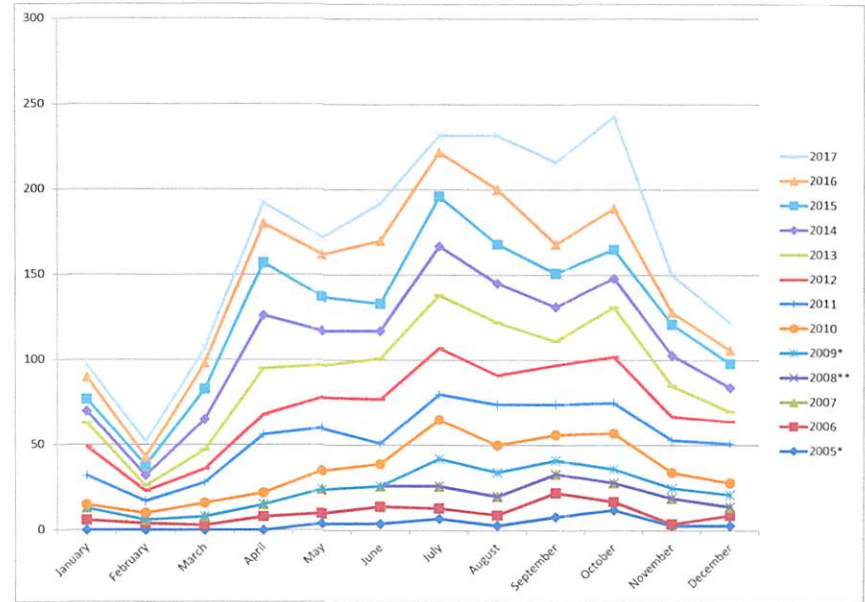
Year	Total
*2005	44
2006	75
2007	113
2008	108
*2009	59
2010	136
2011	224
2012	208
2013	227
2014	219
2015	219
2016	232
2017	251

*Partial Data for the
Year



**C. Yearly Totals of East Moline Residential HHM Participants
2005-2017**

	2005*	2006	2007	2008**	2009*	2010	2011	2012	2013	2014	*Partial year **Year end report used, no monthly breakdowns available
January	N/A	6	7		N/A	2	17	17	14	7	
February	N/A	4	2		N/A	4	7	6	3	6	
March	N/A	3	5		N/A	8	12	8	11	18	
April	N/A	8	7		N/A	7	34	12	27	31	
May	4	6	14		N/A	11	25	18	19	20	
June	4	10	12		N/A	13	12	26	24	16	
July	7	6	13		16	23	15	27	31	29	
August	3	6	11		14	16	24	17	31	23	
September	8	14	11		8	15	18	23	14	20	
October	12	5	11		8	21	18	27	29	17	
November	3	1	15		6	9	19	14	18	18	
December	3	6	5		7	7	23	13	6	14	
TOTALS	44	75	113	108	59	136	224	208	227	219	
	2015	2016	2017	2018	2019	2020	2021	2022	2023	2024	
January	7	13	7								
February	6	5	9								
March	18	15	9								
April	31	23	12								
May	20	25	10								
June	16	37	22								
July	29	26	10								
August	23	32	32								
September	20	17	48								
October	17	24	54								
November	18	7	22								
December	14	8	16								
TOTALS	219	232	251	0	0	0	0	0	0	0	



HHM OPERATIONAL REPORT FOR THE MONTH OF JULY, 2016

SCOTT COUNTY HHM PARTICIPANTS				
COMMUNITY	MONTH OF JULY, 2016		FISCAL YEAR-TO-DATE	
	TOTAL CUSTOMERS	% OF CUSTOMERS	TOTAL CUSTOMERS	% OF CUSTOMERS
Bettendorf	76	23.53%	76	23.53%
Blue Grass	8	2.48%	8	2.48%
Buffalo	1	0.31%	1	0.31%
Davenport	192	59.44%	192	59.44%
Dixon	4	1.24%	4	1.24%
Donahue	1	0.31%	1	0.31%
Eldridge	21	6.50%	21	6.50%
LeClaire	11	3.41%	11	3.41%
Long Grove	3	0.93%	3	0.93%
Maysville	0	0.00%	0	0.00%
McCausland	0	0.00%	0	0.00%
New Liberty	1	0.31%	1	0.31%
Park View	1	0.31%	1	0.31%
Pleasant Valley	0	0.00%	0	0.00%
Princeton	0	0.00%	0	0.00%
Riverdale	0	0.00%	0	0.00%
Scott County	0	0.00%	0	0.00%
Walcott	4	1.24%	4	1.24%
TOTALS	323	100%	323	100%
LF - Permanent	221	68%	221	68%
MRF - Satellite	102	32%	102	32%
TOTALS	323	100%	323	100%
SCOTT COUNTY PRODUCT EXCHANGE USE				
	JULY	TOTAL FY17		
Participants	104	104		
Materials	Automotive, Household, Home Improvement, Lawn & Garden, Latex Paint, Oil Based Paint			
Total Pounds	2,744.0	2,744.0		
SCOTT COUNTY CESQG'S				
	JULY	TOTAL FY17		
Participants	23	23		
Revenue	\$ 3,601.93	\$ 3,601.93		
Pounds	4,442.4	4442.4		

HHM OPERATIONAL REPORT FOR THE MONTH OF JULY, 2016

ROCK ISLAND COUNTY HHM PARTICIPANTS				
COMMUNITY	MONTH OF JULY, 2016		FISCAL YEAR-TO-DATE	
	TOTAL CUSTOMERS	% OF CUSTOMERS	TOTAL CUSTOMERS	% OF CUSTOMERS
Andalusia	2	2.15%	2	2.15%
Carbon Cliff	1	1.08%	1	1.08%
Coal Valley	6	6.45%	6	6.45%
East Moline	10	10.75%	10	10.75%
Hampton	1	1.08%	1	1.08%
Hillsdale	0	0.00%	0	0.00%
Illinois City	0	0.00%	0	0.00%
Milan	9	9.68%	9	9.68%
Moline	29	31.18%	29	31.18%
Port Byron	0	0.00%	0	0.00%
Rapids City	1	1.08%	1	1.08%
Reynolds	0	0.00%	0	0.00%
Rock Island	28	30.11%	28	30.11%
Rock Island County	1	1.08%	1	1.08%
Silvis	3	3.23%	3	3.23%
Taylor Ridge	2	2.15%	2	2.15%
TOTALS	93	100%	93	100%
LF - Permanent	83	89%	83	89%
MRF - Satellite	10	11%	10	11%
TOTALS	93	100%	93	100%
ROCK ISLAND COUNTY PRODUCT EXCHANGE USE				
	JULY	TOTAL FY17		
Participants	15	15		
Materials	Automotive, Household, Home Improvement, Lawn & Garden, Latex Paint, Oil Based Paint			
Total Pounds	1,054.0	1,054.0		
ROCK ISLAND COUNTY CESQG'S				
	JULY	TOTAL FY17		
Participants	9	9		
Revenue	\$ 3,031.30	\$ 3,031.30		
Pounds	2,685.2	2,685.2		

HHM OPERATIONAL REPORT FOR THE MONTH OF JULY, 2016

TOTAL HHM PARTICIPANTS				
	MONTH OF JULY, 2016		FISCAL YEAR-TO-DATE	
Scott County	323	78%	323	78%
Rock Island County	93	22%	93	22%
TOTALS	416	100%	416	100%
LF - Permanent	304	73%	304	73%
MRF - Satellite	112	27%	112	27%
TOTALS	416	100%	416	100%
TOTAL PRODUCT EXCHANGE USE				
	JULY	TOTAL FY17		
Participants	119	119		
Materials	Automotive, Household, Home Improvement, Lawn & Garden, Latex Paint, Oil Based Paint			
Total Pounds	3,798	3,798		
TOTAL CESQG'S				
	JULY	TOTAL FY17		
Participants	32	32		
Revenue	\$ 6,633.23	\$ 6,633.23		
Pounds	7,127.6	7,127.6		

HHM OPERATIONAL REPORT FOR THE MONTH OF AUGUST, 2016

SCOTT COUNTY HHM PARTICIPANTS				
COMMUNITY	MONTH OF AUGUST, 2016		FISCAL YEAR-TO-DATE	
	TOTAL CUSTOMERS	% OF CUSTOMERS	TOTAL CUSTOMERS	% OF CUSTOMERS
Bettendorf	341	33.76%	417	31.28%
Blue Grass	12	1.19%	20	1.50%
Buffalo	3	0.30%	4	0.30%
Davenport	536	53.07%	728	54.61%
Dixon	5	0.50%	9	0.68%
Donahue	7	0.69%	8	0.60%
Eldridge	44	4.36%	65	4.88%
LeClaire	19	1.88%	30	2.25%
Long Grove	14	1.39%	17	1.28%
Maysville	0	0.00%	0	0.00%
McCausland	1	0.10%	1	0.08%
New Liberty	5	0.50%	6	0.45%
Park View	4	0.40%	5	0.38%
Pleasant Valley	0	0.00%	0	0.00%
Princeton	5	0.50%	5	0.38%
Riverdale	6	0.59%	6	0.45%
Scott County	0	0.00%	0	0.00%
Walcott	8	0.79%	12	0.90%
TOTALS	1,010	100%	1,333	100%
LF - Buffalo	39	4%	260	20%
MRF - Davenport	971	96%	1,073	80%
TOTALS	1,010	100%	1,333	100%
SCOTT COUNTY PRODUCT EXCHANGE USE				
	AUGUST	TOTAL FY17		
Participants	57	161		
Materials	Automotive, Household, Home Improvement, Lawn & Garden, Latex Paint, Oil Based Paint			
Total Pounds	2,646	5,390		
SCOTT COUNTY CESQG'S				
	AUGUST	TOTAL FY17		
Participants	32	55		
Revenue	\$ 3,870.15	\$ 7,472.08		
Pounds	5,130	9,572		

HMM OPERATIONAL REPORT FOR THE MONTH OF AUGUST, 2016

ROCK ISLAND COUNTY HMM PARTICIPANTS				
COMMUNITY	MONTH OF AUGUST, 2016		FISCAL YEAR-TO-DATE	
	TOTAL CUSTOMERS	% OF CUSTOMERS	TOTAL CUSTOMERS	% OF CUSTOMERS
Andalusia	6	2.47%	8	2.38%
Carbon Cliff	1	0.41%	2	0.60%
Coal Valley	18	7.41%	24	7.14%
East Moline	32	13.17%	42	12.50%
Hampton	3	1.23%	4	1.19%
Hillsdale	2	0.82%	2	0.60%
Illinois City	1	0.41%	1	0.30%
Milan	14	5.76%	23	6.85%
Moline	70	28.81%	99	29.46%
Port Byron	13	5.35%	13	3.87%
Rapids City	2	0.82%	3	0.89%
Reynolds	0	0.00%	0	0.00%
Rock Island	67	27.57%	95	28.27%
Rock Island County	1	0.41%	2	0.60%
Silvis	9	3.70%	12	3.57%
Taylor Ridge	4	1.65%	6	1.79%
TOTALS	243	100%	336	100%
LF - Buffalo	15	6%	98	29%
MRF - Davenport	228	94%	238	71%
TOTALS	243	100%	336	100%
ROCK ISLAND COUNTY PRODUCT EXCHANGE USE				
	AUGUST	TOTAL FY17		
Participants	3	18		
Materials	Automotive, Household, Home Improvement, Lawn & Garden, Latex Paint, Oil Based Paint			
Total Pounds	908	1,962		
ROCK ISLAND COUNTY CESQG'S				
	AUGUST	TOTAL FY17	John Deere Event Totals	JD added to August Total
Participants	13	22	1	14
Revenue	\$ 4,440.07	\$ 7,471.37	\$ 10,058.90	\$ 14,498.97
Pounds	5,150	7,835	34,894	40,044

HHM OPERATIONAL REPORT FOR THE MONTH OF AUGUST, 2016

TOTAL HHM PARTICIPANTS				
	MONTH OF AUGUST, 2016		FISCAL YEAR-TO-DATE	
Scott County	1,010	81%	1,333	80%
Rock Island County	243	19%	336	20%
TOTALS	1,253	100%	1,669	100%
LF - Buffalo	54	4%	358	21%
MRF - Davenport	1,199	96%	1,311	79%
TOTALS	1,253	100%	1,669	100%
TOTAL PRODUCT EXCHANGE USE				
	AUGUST	TOTAL FY17		
Participants	60	179		
Materials	Automotive, Household, Home Improvement, Lawn & Garden, Latex Paint, Oil Based Paint			
Total Pounds	3,554	7,352		
TOTAL CESQG'S				
	AUGUST	TOTAL FY17		
Participants	45	77		
Revenue	\$ 8,310.22	\$ 14,943.45		
Pounds	10280	17407.6		

HHM OPERATIONAL REPORT FOR THE MONTH OF SEPTEMBER, 2016

SCOTT COUNTY HHM PARTICIPANTS				
COMMUNITY	MONTH OF SEPTEMBER, 2016		FISCAL YEAR-TO-DATE	
	TOTAL CUSTOMERS	% OF CUSTOMERS	TOTAL CUSTOMERS	% OF CUSTOMERS
Bettendorf	385	42.40%	802	35.79%
Blue Grass	19	2.09%	39	1.74%
Buffalo	2	0.22%	6	0.27%
Davenport	408	44.93%	1,136	50.69%
Dixon	5	0.55%	14	0.62%
Donahue	8	0.88%	16	0.71%
Eldridge	35	3.85%	100	4.46%
LeClaire	13	1.43%	43	1.92%
Long Grove	11	1.21%	28	1.25%
Maysville	0	0.00%	0	0.00%
McCausland	0	0.00%	1	0.04%
New Liberty	0	0.00%	6	0.27%
Park View	6	0.66%	11	0.49%
Pleasant Valley	0	0.00%	0	0.00%
Princeton	4	0.44%	9	0.40%
Riverdale	2	0.22%	8	0.36%
Scott County	2	0.22%	2	0.09%
Walcott	8	0.88%	20	0.89%
TOTALS	908	100%	2,241	100%
LF - Permanent	20	2%	280	12%
MRF - Satellite	888	98%	1,961	88%
TOTALS	908	100%	2,241	100%
SCOTT COUNTY PRODUCT EXCHANGE USE				
	SEPTEMBER	TOTAL FY17		
Participants	82	243		
Materials	Automotive, Household, Home Improvement, Lawn & Garden, Latex Paint, Oil Based Paint			
Total Pounds	2,349	7,739		
SCOTT COUNTY CESQG'S				
	SEPTEMBER	TOTAL FY17		
Participants	26	81		
Revenue	\$ 4,794.12	\$ 12,266.20		
Pounds	4,847.2	14,420		

HHM OPERATIONAL REPORT FOR THE MONTH OF SEPTEMBER, 2016

ROCK ISLAND COUNTY HHM PARTICIPANTS				
COMMUNITY	MONTH OF SEPTEMBER, 2016		FISCAL YEAR-TO-DATE	
	TOTAL CUSTOMERS	% OF CUSTOMERS	TOTAL CUSTOMERS	% OF CUSTOMERS
Andalusia	5	1.91%	13	2.17%
Carbon Cliff	0	0.00%	2	0.33%
Coal Valley	10	3.82%	34	5.69%
East Moline	48	18.32%	90	15.05%
Hampton	10	3.82%	14	2.34%
Hillsdale	2	0.76%	4	0.67%
Illinois City	0	0.00%	1	0.17%
Milan	18	6.87%	41	6.86%
Moline	74	28.24%	173	28.93%
Port Byron	22	8.40%	35	5.85%
Rapids City	1	0.38%	4	0.67%
Reynolds	2	0.76%	2	0.33%
Rock Island	54	20.61%	149	24.92%
Rock Island County	1	0.38%	3	0.50%
Silvis	11	4.20%	23	3.85%
Taylor Ridge	4	1.53%	10	1.67%
TOTALS	262	100%	598	100%
LF - Permanent	7	3%	105	18%
MRF - Satellite	255	97%	493	82%
TOTALS	262	100%	598	100%
ROCK ISLAND COUNTY PRODUCT EXCHANGE USE				
	SEPTEMBER	TOTAL FY17		
Participants	9	27		
Materials	Automotive, Household, Home Improvement, Lawn & Garden, Latex Paint, Oil Based Paint			
Total Pounds	1,003	2,965		
ROCK ISLAND COUNTY CESQ'S				
	SEPTEMBER	TOTAL FY17		
Participants	13	35		
Revenue	\$ 3,935.45	\$ 11,406.82		
Pounds	4,160.8	11,996		

HHM OPERATIONAL REPORT FOR THE MONTH OF SEPTEMBER, 2016

TOTAL HHM PARTICIPANTS				
	MONTH OF SEPTEMBER, 2016		FISCAL YEAR-TO-DATE	
Scott County	908	78%	2,241	79%
Rock Island County	262	22%	598	21%
TOTALS	1,170	100%	2,839	100%
LF - Permanent	27	2%	385	14%
MRF - Satellite	1,143	98%	2,454	86%
TOTALS	1,170	100%	2,839	100%
TOTAL PRODUCT EXCHANGE USE				
	SEPTEMBER	TOTAL FY17		
Participants	91	270		
Materials	Automotive, Household, Home Improvement, Lawn & Garden, Latex Paint, Oil Based Paint			
Total Pounds	3,352	10,704		
TOTAL CESQG'S				
	SEPTEMBER	TOTAL FY17		
Participants	39	116		
Revenue	\$ 8,729.57	\$ 23,673.02		
Pounds	9008.0	26416		

HHM OPERATIONAL REPORT FOR THE MONTH OF OCTOBER, 2016

SCOTT COUNTY HHM PARTICIPANTS				
COMMUNITY	MONTH OF OCTOBER, 2016		FISCAL YEAR-TO-DATE	
	TOTAL CUSTOMERS	% OF CUSTOMERS	TOTAL CUSTOMERS	% OF CUSTOMERS
Bettendorf	336	37.63%	1,138	36.31%
Blue Grass	8	0.90%	47	1.50%
Buffalo	4	0.45%	10	0.32%
Davenport	470	52.63%	1,606	51.24%
Dixon	5	0.56%	19	0.61%
Donahue	4	0.45%	20	0.64%
Eldridge	21	2.35%	121	3.86%
LeClaire	14	1.57%	57	1.82%
Long Grove	14	1.57%	42	1.34%
Maysville	1	0.11%	1	0.03%
McCausland	3	0.34%	4	0.13%
New Liberty	0	0.00%	6	0.19%
Park View	0	0.00%	11	0.35%
Pleasant Valley	0	0.00%	0	0.00%
Princeton	3	0.34%	12	0.38%
Riverdale	2	0.22%	10	0.32%
Scott County	4	0.45%	6	0.19%
Walcott	4	0.45%	24	0.77%
TOTALS	893	100%	3,134	100%
LF - Permanent	9	1%	289	9%
MRF - Satellite	884	99%	2,845	91%
TOTALS	893	100%	3,134	100%
SCOTT COUNTY PRODUCT EXCHANGE USE				
	OCTOBER	TOTAL FY17		
Participants	80	323		
Materials	Automotive, Household, Home Improvement, Lawn & Garden, Latex Paint, Oil Based Paint			
Total Pounds	3,853	11,592		
SCOTT COUNTY CESQG'S				
	OCTOBER	TOTAL FY17		
Participants	24	105		
Revenue	\$ 5,347.07	\$ 17,613.27		
Pounds	7,191	21,611		

HMM OPERATIONAL REPORT FOR THE MONTH OF OCTOBER, 2016

ROCK ISLAND COUNTY HMM PARTICIPANTS				
COMMUNITY	MONTH OF OCTOBER, 2016		FISCAL YEAR-TO-DATE	
	TOTAL CUSTOMERS	% OF CUSTOMERS	TOTAL CUSTOMERS	% OF CUSTOMERS
Andalusia	3	1.05%	16	1.81%
Carbon Cliff	0	0.00%	2	0.23%
Coal Valley	26	9.09%	60	6.79%
East Moline	54	18.88%	144	16.29%
Hampton	5	1.75%	19	2.15%
Hillsdale	1	0.35%	5	0.57%
Illinois City	0	0.00%	1	0.11%
Milan	19	6.64%	60	6.79%
Moline	76	26.57%	249	28.17%
Port Byron	9	3.15%	44	4.98%
Rapids City	4	1.40%	8	0.90%
Reynolds	0	0.00%	2	0.23%
Rock Island	59	20.63%	208	23.53%
Rock Island County	2	0.70%	5	0.57%
Silvis	23	8.04%	46	5.20%
Taylor Ridge	5	1.75%	15	1.70%
TOTALS	286	100%	884	100%
LF - Permanent	5	2%	110	12%
MRF - Satellite	281	98%	774	88%
TOTALS	286	100%	884	100%
ROCK ISLAND COUNTY PRODUCT EXCHANGE USE				
	OCTOBER	TOTAL FY17		
Participants	10	37		
Materials	Automotive, Household, Home Improvement, Lawn & Garden, Latex Paint, Oil Based Paint			
Total Pounds	1,499	4,464		
ROCK ISLAND COUNTY CESQG'S				
	OCTOBER	TOTAL FY17		
Participants	15	50		
Revenue	\$ 6,400.55	\$ 17,807.37		
Pounds	6,070	18,066		

HHM OPERATIONAL REPORT FOR THE MONTH OF OCTOBER, 2016

TOTAL HHM PARTICIPANTS				
	MONTH OF OCTOBER, 2016		FISCAL YEAR-TO-DATE	
Scott County	893	76%	3,134	78%
Rock Island County	286	24%	884	22%
TOTALS	1,179	100%	4,018	100%
LF - Permanent	14	1%	399	10%
MRF - Satellite	1,165	99%	3,619	90%
TOTALS	1,179	100%	4,018	100%
TOTAL PRODUCT EXCHANGE USE				
	OCTOBER	TOTAL FY17		
Participants	90	360		
Materials	Automotive, Household, Home Improvement, Lawn & Garden, Latex Paint, Oil Based Paint			
Total Pounds	5,352	16,056		
TOTAL CESQG'S				
	OCTOBER	TOTAL FY17		
Participants	39	155		
Revenue	\$ 11,747.62	\$ 35,420.64		
Pounds	13,261	39,677		

HHM OPERATIONAL REPORT FOR THE MONTH OF NOVEMBER, 2016

SCOTT COUNTY HHM PARTICIPANTS				
COMMUNITY	MONTH OF NOVEMBER, 2016		FISCAL YEAR-TO-DATE	
	TOTAL CUSTOMERS	% OF CUSTOMERS	TOTAL CUSTOMERS	% OF CUSTOMERS
Bettendorf	290	33.33%	1,428	35.66%
Blue Grass	16	1.84%	63	1.57%
Buffalo	0	0.00%	10	0.25%
Davenport	478	54.94%	2,084	52.05%
Dixon	6	0.69%	25	0.62%
Donahue	3	0.34%	23	0.57%
Eldridge	35	4.02%	156	3.90%
LeClaire	12	1.38%	69	1.72%
Long Grove	11	1.26%	53	1.32%
Maysville	1	0.11%	2	0.05%
McCausland	0	0.00%	4	0.10%
New Liberty	0	0.00%	6	0.15%
Park View	1	0.11%	12	0.30%
Pleasant Valley	0	0.00%	0	0.00%
Princeton	2	0.23%	14	0.35%
Riverdale	3	0.34%	13	0.32%
Scott County	2	0.23%	8	0.20%
Walcott	10	1.15%	34	0.85%
TOTALS	870	100%	4,004	100%
LF - Permanent	13	1%	302	8%
MRF - Satellite	857	99%	3,702	92%
TOTALS	870	100%	4,004	100%
SCOTT COUNTY PRODUCT EXCHANGE USE				
	NOVEMBER	TOTAL FY17		
Participants	68	391		
Materials	Automotive, Household, Home Improvement, Lawn & Garden, Latex Paint, Oil Based Paint			
Total Pounds	3,357	14,949		
SCOTT COUNTY CESQG'S				
	NOVEMBER	TOTAL FY17		
Participants	28	133		
Revenue	\$ 4,535.83	\$ 22,149.10		
Pounds	3,752	25,363		

HHM OPERATIONAL REPORT FOR THE MONTH OF NOVEMBER, 2016

ROCK ISLAND COUNTY HHM PARTICIPANTS				
COMMUNITY	MONTH OF NOVEMBER, 2016		FISCAL YEAR-TO-DATE	
	TOTAL CUSTOMERS	% OF CUSTOMERS	TOTAL CUSTOMERS	% OF CUSTOMERS
Andalusia	7	3.35%	23	2.10%
Carbon Cliff	0	0.00%	2	0.18%
Coal Valley	8	3.83%	68	6.22%
East Moline	22	10.53%	166	15.19%
Hampton	4	1.91%	23	2.10%
Hillsdale	1	0.48%	6	0.55%
Illinois City	2	0.96%	3	0.27%
Milan	11	5.26%	71	6.50%
Moline	70	33.49%	319	29.19%
Port Byron	7	3.35%	51	4.67%
Rapids City	0	0.00%	8	0.73%
Reynolds	0	0.00%	2	0.18%
Rock Island	59	28.23%	267	24.43%
Rock Island County	5	2.39%	10	0.91%
Silvis	8	3.83%	54	4.94%
Taylor Ridge	5	2.39%	20	1.83%
TOTALS	209	100%	1,093	100%
LF - Permanent	3	1%	113	10%
MRF - Satellite	206	99%	980	90%
TOTALS	209	100%	1,093	100%
ROCK ISLAND COUNTY PRODUCT EXCHANGE USE				
	NOVEMBER	TOTAL FY17		
Participants	10	47		
Materials	Automotive, Household, Home Improvement, Lawn & Garden, Latex Paint, Oil Based Paint			
Total Pounds	1,779	6,243		
ROCK ISLAND COUNTY CESQG'S				
	NOVEMBER	TOTAL FY17		
Participants	6	56		
Revenue	\$ 423.22	\$ 18,230.59		
Pounds	736	18,802		

HHM OPERATIONAL REPORT FOR THE MONTH OF NOVEMBER, 2016

TOTAL HHM PARTICIPANTS				
	MONTH OF NOVEMBER, 2016		FISCAL YEAR-TO-DATE	
Scott County	870	81%	4,004	79%
Rock Island County	209	19%	1,093	21%
TOTALS	1,079	100%	5,097	100%
LF - Permanent	16	1%	415	8%
MRF - Satellite	1,063	99%	4,682	92%
TOTALS	1,079	100%	5,097	100%
TOTAL PRODUCT EXCHANGE USE				
	NOVEMBER	TOTAL FY17		
Participants	78	438		
Materials	Automotive, Household, Home Improvement, Lawn & Garden, Latex Paint, Oil Based Paint			
Total Pounds	5,136	21,192		
TOTAL CESQG'S				
	NOVEMBER	TOTAL FY17		
Participants	34	189		
Revenue	\$ 4,959.05	\$ 40,379.69		
Pounds	4488	44164.6		

HHM OPERATIONAL REPORT FOR THE MONTH OF DECEMBER, 2016

SCOTT COUNTY HHM PARTICIPANTS				
COMMUNITY	MONTH OF DECEMBER, 2016		FISCAL YEAR-TO-DATE	
	TOTAL CUSTOMERS	% OF CUSTOMERS	TOTAL CUSTOMERS	% OF CUSTOMERS
Bettendorf	209	34.49%		0.00%
Blue Grass	7	1.16%	70	2.35%
Buffalo	0	0.00%	10	0.34%
Davenport	333	54.95%	2,417	81.30%
Dixon	2	0.33%	27	0.91%
Donahue	1	0.17%	24	0.81%
Eldridge	23	3.80%	179	6.02%
LeClaire	8	1.32%	77	2.59%
Long Grove	7	1.16%	60	2.02%
Maysville	2	0.33%	4	0.13%
McCausland	1	0.17%	5	0.17%
New Liberty	0	0.00%	6	0.20%
Park View	2	0.33%	14	0.47%
Pleasant Valley	0	0.00%	0	0.00%
Princeton	3	0.50%	17	0.57%
Riverdale	1	0.17%	14	0.47%
Scott County	1	0.17%	9	0.30%
Walcott	6	0.99%	40	1.35%
TOTALS	606	100%	2,973	100%

LF - Satellite	7	1%	309	7%
MRF - Permanent	599	99%	4,301	93%
TOTALS	606	100%	4,610	100%

SCOTT COUNTY PRODUCT EXCHANGE USE		
	DECEMBER	TOTAL FY17
Participants	50	441
Materials	Automotive, Household, Home Improvement, Lawn & Garden, Latex Paint, Oil Based Paint	
Total Pounds	1,974	16,923

SCOTT COUNTY CESQG'S		
	DECEMBER	TOTAL FY17
Participants	24	157
Revenue	\$ 3,560.00	\$ 25,709.10
Pounds	4,886.0	30,249

HHM OPERATIONAL REPORT FOR THE MONTH OF DECEMBER, 2016

ROCK ISLAND COUNTY HHM PARTICIPANTS				
COMMUNITY	MONTH OF DECEMBER, 2016		FISCAL YEAR-TO-DATE	
	TOTAL CUSTOMERS	% OF CUSTOMERS	TOTAL CUSTOMERS	% OF CUSTOMERS
Andalusia	0	0.00%	23	1.88%
Carbon Cliff	0	0.00%	2	0.16%
Coal Valley	14	10.85%	82	6.71%
East Moline	16	12.40%	182	14.89%
Hampton	6	4.65%	29	2.37%
Hillsdale	0	0.00%	6	0.49%
Illinois City	0	0.00%	3	0.25%
Milan	12	9.30%	83	6.79%
Moline	33	25.58%	352	28.81%
Port Byron	10	7.75%	61	4.99%
Rapids City	2	1.55%	10	0.82%
Reynolds	0	0.00%	2	0.16%
Rock Island	27	20.93%	294	24.06%
Rock Island County	0	0.00%	10	0.82%
Silvis	7	5.43%	61	4.99%
Taylor Ridge	2	1.55%	22	1.80%
TOTALS	129	100%	1,222	100%

LF - Satellite	6	5%	119	10%
MRF - Permanent	123	95%	1,103	90%
TOTALS	129	100%	1,222	100%

ROCK ISLAND COUNTY PRODUCT EXCHANGE USE		
	DECEMBER	TOTAL FY17
Participants	1	48
Materials	Automotive, Household, Home Improvement, Lawn & Garden, Latex Paint, Oil Based Paint	
Total Pounds	852	7,095

ROCK ISLAND COUNTY CESQG'S		
	DECEMBER	TOTAL FY17
Participants	10	66
Revenue	\$ 6,371.30	\$ 24,601.89
Pounds	8,351.8	27,154

HHM OPERATIONAL REPORT FOR THE MONTH OF DECEMBER, 2016

TOTAL HHM PARTICIPANTS				
	MONTH OF DECEMBER, 2016		FISCAL YEAR-TO-DATE	
Scott County	606	82%	4,610	79%
Rock Island County	129	18%	1,222	21%
TOTALS	735	100%	5,832	100%

LF - Permanent	13	2%	428	7%
MRF - Satellite	722	98%	5,404	93%
TOTALS	735	100%	5,832	100%

TOTAL PRODUCT EXCHANGE USE		
	DECEMBER	TOTAL FY17
Participants	51	489
Materials	Automotive, Household, Home Improvement, Lawn & Garden, Latex Paint, Oil Based Paint	
Total Pounds	2,826	24,018

TOTAL CESQG'S		
	DECEMBER	TOTAL FY17
Participants	34	223
Revenue	\$ 9,931.30	\$ 50,310.99
Pounds	13237.8	57402.4

HMM OPERATIONAL REPORT FOR THE MONTH OF JANUARY, 2017

SCOTT COUNTY HMM PARTICIPANTS				
COMMUNITY	MONTH OF JANUARY, 2017		FISCAL YEAR-TO-DATE	
	TOTAL CUSTOMERS	% OF CUSTOMERS	TOTAL CUSTOMERS	% OF CUSTOMERS
Bettendorf	155	26.91%	155	4.37%
Blue Grass	13	2.26%	83	2.34%
Buffalo	2	0.35%	12	0.34%
Davenport	341	59.20%	2,758	77.71%
Dixon	1	0.17%	28	0.79%
Donahue	0	0.00%	24	0.68%
Eldridge	25	4.34%	204	5.75%
LeClaire	21	3.65%	98	2.76%
Long Grove	4	0.69%	64	1.80%
Maysville	0	0.00%	4	0.11%
McCausland	0	0.00%	5	0.14%
New Liberty	2	0.35%	8	0.23%
Park View	0	0.00%	14	0.39%
Pleasant Valley	0	0.00%	0	0.00%
Princeton	2	0.35%	19	0.54%
Riverdale	1	0.17%	15	0.42%
Scott County	1	0.17%	10	0.28%
Walcott	8	1.39%	48	1.35%
TOTALS	576	100%	3,549	100%
LF - Satellite	7	1%	316	6%
MRF - Permanent	569	99%	4,870	94%
TOTALS	576	100%	5,186	100%
SCOTT COUNTY PRODUCT EXCHANGE USE				
	JANUARY	TOTAL FY17		
Participants	31	472		
Materials	Automotive, Household, Home Improvement, Lawn & Garden, Latex Paint, Oil Based Paint			
Total Pounds	1,530	18,453		
SCOTT COUNTY CESQG'S				
	JANUARY	TOTAL FY17		
Participants	20	177		
Revenue	\$ 4,784.64	\$ 30,493.74		
Pounds	7,795.2	38,043.8		

HHM OPERATIONAL REPORT FOR THE MONTH OF JANUARY, 2017

ROCK ISLAND COUNTY HHM PARTICIPANTS				
COMMUNITY	MONTH OF JANUARY, 2017		FISCAL YEAR-TO-DATE	
	TOTAL CUSTOMERS	% OF CUSTOMERS	TOTAL CUSTOMERS	% OF CUSTOMERS
Andalusia	2	1.98%	25	1.89%
Carbon Cliff	0	0.00%	2	0.15%
Coal Valley	6	5.94%	88	6.65%
East Moline	14	13.86%	196	14.81%
Hampton	2	1.98%	31	2.34%
Hillsdale	1	0.99%	7	0.53%
Illinois City	1	0.99%	4	0.30%
Milan	1	0.99%	84	6.35%
Moline	31	30.69%	383	28.95%
Port Byron	4	3.96%	65	4.91%
Rapids City	0	0.00%	10	0.76%
Reynolds	0	0.00%	2	0.15%
Rock Island	27	26.73%	321	24.26%
Rock Island County	3	2.97%	13	0.98%
Silvis	6	5.94%	67	5.06%
Taylor Ridge	3	2.97%	25	1.89%
TOTALS	101	100%	1,323	100%
LF - Satellite	3	3%	122	9%
MRF - Permanent	98	97%	1,201	91%
TOTALS	101	100%	1,323	100%
ROCK ISLAND COUNTY PRODUCT EXCHANGE USE				
	JANUARY	TOTAL FY17		
Participants	0	48		
Materials	Automotive, Household, Home Improvement, Lawn & Garden, Latex Paint, Oil Based Paint			
Total Pounds	714	7,809		
ROCK ISLAND COUNTY CESQG'S				
	JANUARY	TOTAL FY17		
Participants	9	75		
Revenue	\$ 8,420.90	\$ 33,022.79		
Pounds	9,952.4	37,106.2		

HHM OPERATIONAL REPORT FOR THE MONTH OF JANUARY, 2017

TOTAL HHM PARTICIPANTS				
	MONTH OF JANUARY, 2017		FISCAL YEAR-TO-DATE	
Scott County	576	85%	5,186	80%
Rock Island County	101	15%	1,323	20%
TOTALS	677	100%	6,509	100%
LF - Satellite	10	1%	438	7%
MRF - Permanent	667	99%	6,071	93%
TOTALS	677	100%	6,509	100%
TOTAL PRODUCT EXCHANGE USE				
	JANUARY	TOTAL FY17		
Participants	31	520		
Materials	Automotive, Household, Home Improvement, Lawn & Garden, Latex Paint, Oil Based Paint			
Total Pounds	2,244	26,262		
TOTAL CESQG'S				
	JANUARY	TOTAL FY17		
Participants	29	252		
Revenue	\$ 13,205.54	\$ 63,516.53		
Pounds	17747.6	75150		

HHM OPERATIONAL REPORT FOR THE MONTH OF FEBRUARY, 2017

SCOTT COUNTY HHM PARTICIPANTS				
COMMUNITY	MONTH OF FEBRUARY, 2017		FISCAL YEAR-TO-DATE	
	TOTAL CUSTOMERS	% OF CUSTOMERS	TOTAL CUSTOMERS	% OF CUSTOMERS
Bettendorf	193	31.48%	348	8.36%
Blue Grass	9	1.47%	92	2.21%
Buffalo	2	0.33%	14	0.34%
Davenport	322	52.53%	3,080	74.00%
Dixon	3	0.49%	31	0.74%
Donahue	2	0.33%	26	0.62%
Eldridge	33	5.38%	237	5.69%
LeClaire	21	3.43%	119	2.86%
Long Grove	4	0.65%	68	1.63%
Maysville	2	0.33%	6	0.14%
McCausland	1	0.16%	6	0.14%
New Liberty	0	0.00%	8	0.19%
Park View	2	0.33%	16	0.38%
Pleasant Valley	0	0.00%	0	0.00%
Princeton	5	0.82%	24	0.58%
Riverdale	3	0.49%	18	0.43%
Scott County	3	0.49%	13	0.31%
Walcott	8	1.31%	56	1.35%
TOTALS	613	100%	4,162	100%
LF - Satellite	3	0%	319	6%
MRF - Permanent	610	100%	5,480	94%
TOTALS	613	100%	5,799	100%
SCOTT COUNTY PRODUCT EXCHANGE USE				
	FEBRUARY	TOTAL FY17		
Participants	61	533		
Materials	Automotive, Household, Home Improvement, Lawn & Garden, Latex Paint, Oil Based Paint			
Total Pounds	1,081.5	19,535		
SCOTT COUNTY CESQG'S				
	FEBRUARY	TOTAL FY17		
Participants	28	205		
Revenue	\$ 5,810.55	\$ 36,304.29		
Pounds	7,902.4	45,946		

HMM OPERATIONAL REPORT FOR THE MONTH OF FEBRUARY, 2017

ROCK ISLAND COUNTY HMM PARTICIPANTS				
COMMUNITY	MONTH OF FEBRUARY, 2017		FISCAL YEAR-TO-DATE	
	TOTAL CUSTOMERS	% OF CUSTOMERS	TOTAL CUSTOMERS	% OF CUSTOMERS
Andalusia	5	3.31%	30	2.04%
Carbon Cliff	1	0.66%	3	0.20%
Coal Valley	9	5.96%	97	6.58%
East Moline	24	15.89%	220	14.93%
Hampton	1	0.66%	32	2.17%
Hillsdale	1	0.66%	8	0.54%
Illinois City	0	0.00%	4	0.27%
Milan	8	5.30%	92	6.24%
Moline	49	32.45%	432	29.31%
Port Byron	2	1.32%	67	4.55%
Rapids City	0	0.00%	10	0.68%
Reynolds	1	0.66%	3	0.20%
Rock Island	40	26.49%	361	24.49%
Rock Island County	1	0.66%	14	0.95%
Silvis	3	1.99%	70	4.75%
Taylor Ridge	6	3.97%	31	2.10%
TOTALS	151	100%	1,474	100%
LF - Satellite	1	1%	123	8%
MRF - Permanent	150	99%	1,351	92%
TOTALS	151	100%	1,474	100%
ROCK ISLAND COUNTY PRODUCT EXCHANGE USE				
	FEBRUARY	TOTAL FY17		
Participants	8	56		
Materials	Automotive, Household, Home Improvement, Lawn & Garden, Latex Paint, Oil Based Paint			
Total Pounds	466	8,275		
ROCK ISLAND COUNTY CESQG'S				
	FEBRUARY	TOTAL FY17		
Participants	10	85		
Revenue	\$ 3,694.80	\$ 36,717.59		
Pounds	4,765.0	41,871		

HHM OPERATIONAL REPORT FOR THE MONTH OF FEBRUARY, 2017

TOTAL HHM PARTICIPANTS				
	MONTH OF FEBRUARY, 2017		FISCAL YEAR-TO-DATE	
Scott County	613	80%	5,799	80%
Rock Island County	151	20%	1,474	20%
TOTALS	764	100%	7,273	100%
LF - Satellite	4	1%	442	6%
MRF - Permanent	760	99%	6,831	94%
TOTALS	764	100%	7,273	100%
TOTAL PRODUCT EXCHANGE USE				
	FEBRUARY	TOTAL FY17		
Participants	69	589		
Materials	Automotive, Household, Home Improvement, Lawn & Garden, Latex Paint, Oil Based Paint			
Total Pounds	1,548	27,810		
TOTAL CESQG'S				
	FEBRUARY	TOTAL FY17		
Participants	38	290		
Revenue	\$ 9,505.35	\$ 73,021.88		
Pounds	12667.4	87817.4		

HMM OPERATIONAL REPORT FOR THE MONTH OF MARCH, 2017

SCOTT COUNTY HMM PARTICIPANTS				
COMMUNITY	MONTH OF MARCH, 2017		FISCAL YEAR-TO-DATE	
	TOTAL CUSTOMERS	% OF CUSTOMERS	TOTAL CUSTOMERS	% OF CUSTOMERS
Bettendorf	196	29.39%	544	11.27%
Blue Grass	9	1.35%	101	2.09%
Buffalo	0	0.00%	14	0.29%
Davenport	381	57.12%	3,461	71.67%
Dixon	6	0.90%	37	0.77%
Donahue	7	1.05%	33	0.68%
Eldridge	32	4.80%	269	5.57%
LeClaire	16	2.40%	135	2.80%
Long Grove	7	1.05%	75	1.55%
Maysville	0	0.00%	6	0.12%
McCausland	1	0.15%	7	0.14%
New Liberty	1	0.15%	9	0.19%
Park View	5	0.75%	21	0.43%
Pleasant Valley	0	0.00%	0	0.00%
Princeton	2	0.30%	26	0.54%
Riverdale	0	0.00%	18	0.37%
Scott County	1	0.15%	14	0.29%
Walcott	3	0.45%	59	1.22%
TOTALS	667	100%	4,829	100%
LF - Satellite	7	1%	326	5%
MRF - Permanent	660	99%	6,140	95%
TOTALS	667	100%	6,466	100%
SCOTT COUNTY PRODUCT EXCHANGE USE				
	MARCH	TOTAL FY17		
Participants	54	587		
Materials	Automotive, Household, Home Improvement, Lawn & Garden, Latex Paint, Oil Based Paint			
Total Pounds	2,363	21,898		
SCOTT COUNTY CESQG'S				
	MARCH	TOTAL FY17		
Participants	47	252		
Revenue	\$ 8,355.07	\$ 44,659.36		
Pounds	10,982.8	56,929		

HHM OPERATIONAL REPORT FOR THE MONTH OF MARCH, 2017

ROCK ISLAND COUNTY HHM PARTICIPANTS				
COMMUNITY	MONTH OF MARCH, 2017		FISCAL YEAR-TO-DATE	
	TOTAL CUSTOMERS	% OF CUSTOMERS	TOTAL CUSTOMERS	% OF CUSTOMERS
Andalusia	0	0.00%	30	1.81%
Carbon Cliff	0	0.00%	3	0.18%
Coal Valley	9	4.92%	106	6.40%
East Moline	25	13.66%	245	14.79%
Hampton	4	2.19%	36	2.17%
Hillsdale	1	0.55%	9	0.54%
Illinois City	1	0.55%	5	0.30%
Milan	11	6.01%	103	6.22%
Moline	59	32.24%	491	29.63%
Port Byron	10	5.46%	77	4.65%
Rapids City	3	1.64%	13	0.78%
Reynolds	0	0.00%	3	0.18%
Rock Island	44	24.04%	405	24.44%
Rock Island County	0	0.00%	14	0.84%
Silvis	12	6.56%	82	4.95%
Taylor Ridge	4	2.19%	35	2.11%
TOTALS	183	100%	1,657	100%
LF - Satellite	5	3%	128	8%
MRF - Permanent	178	97%	1,529	92%
TOTALS	183	100%	1,657	100%
ROCK ISLAND COUNTY PRODUCT EXCHANGE USE				
	MARCH	TOTAL FY17		
Participants	5	61		
Materials	Automotive, Household, Home Improvement, Lawn & Garden, Latex Paint, Oil Based Paint			
Total Pounds	1,145	9,420		
ROCK ISLAND COUNTY CESQG'S				
	MARCH	TOTAL FY17		
Participants	17	102		
Revenue	\$ 7,535.20	\$ 44,252.79		
Pounds	11,201.0	53,072		

HHM OPERATIONAL REPORT FOR THE MONTH OF MARCH, 2017

TOTAL HHM PARTICIPANTS				
	MONTH OF MARCH, 2017		FISCAL YEAR-TO-DATE	
Scott County	667	78%	6,466	80%
Rock Island County	183	22%	1,657	20%
TOTALS	850	100%	8,123	100%
LF - Satellite	12	1%	454	6%
MRF - Permanent	838	99%	7,669	94%
TOTALS	850	100%	8,123	100%
TOTAL PRODUCT EXCHANGE USE				
	MARCH	TOTAL FY17		
Participants	59	648		
Materials	Automotive, Household, Home Improvement, Lawn & Garden, Latex Paint, Oil Based Paint			
Total Pounds	3,508	31,318		
TOTAL CESQG'S				
	MARCH	TOTAL FY17		
Participants	64	354		
Revenue	\$ 15,890.27	\$ 88,912.15		
Pounds	22,183.8	110001.2		

HHM OPERATIONAL REPORT FOR THE MONTH OF APRIL, 2017

SCOTT COUNTY HHM PARTICIPANTS				
COMMUNITY	MONTH OF APRIL, 2017		FISCAL YEAR-TO-DATE	
	TOTAL CUSTOMERS	% OF CUSTOMERS	TOTAL CUSTOMERS	% OF CUSTOMERS
Bettendorf	245	31.01%	789	14.04%
Blue Grass	11	1.39%	112	1.99%
Buffalo	2	0.25%	16	0.28%
Davenport	431	54.56%	3,892	69.26%
Dixon	5	0.63%	42	0.75%
Donahue	8	1.01%	41	0.73%
Eldridge	32	4.05%	301	5.36%
LeClaire	24	3.04%	159	2.83%
Long Grove	13	1.65%	88	1.57%
Maysville	0	0.00%	6	0.11%
McCausland	1	0.13%	8	0.14%
New Liberty	1	0.13%	10	0.18%
Park View	10	1.27%	31	0.55%
Pleasant Valley	0	0.00%	0	0.00%
Princeton	0	0.00%	26	0.46%
Riverdale	0	0.00%	18	0.32%
Scott County	2	0.25%	16	0.28%
Walcott	5	0.63%	64	1.14%
TOTALS	790	100%	5,619	100%
LF - Satellite	5	1%	331	5%
MRF - Permanent	785	99%	6,925	95%
TOTALS	790	100%	7,256	100%
SCOTT COUNTY PRODUCT EXCHANGE USE				
	APRIL	TOTAL FY17		
Participants	76	130		
Materials	Automotive, Household, Home Improvement, Lawn & Garden, Latex Paint, Oil Based Paint			
Total Pounds	1,329	23,227		
SCOTT COUNTY CESQG'S				
	APRIL	TOTAL FY17		
Participants	32	284		
Revenue	\$ 6,701.32	\$ 51,360.68		
Pounds	9,506.6	66,435.6		

HHM OPERATIONAL REPORT FOR THE MONTH OF APRIL, 2017

ROCK ISLAND COUNTY HHM PARTICIPANTS				
COMMUNITY	MONTH OF APRIL, 2017		FISCAL YEAR-TO-DATE	
	TOTAL CUSTOMERS	% OF CUSTOMERS	TOTAL CUSTOMERS	% OF CUSTOMERS
Andalusia	3	1.30%	33	1.75%
Carbon Cliff	0	0.00%	3	0.16%
Coal Valley	5	2.17%	111	5.88%
East Moline	50	21.74%	295	15.63%
Hampton	4	1.74%	40	2.12%
Hillsdale	1	0.43%	10	0.53%
Illinois City	2	0.87%	7	0.37%
Milan	19	8.26%	122	6.47%
Moline	62	26.96%	553	29.31%
Port Byron	6	2.61%	83	4.40%
Rapids City	1	0.43%	14	0.74%
Reynolds	5	2.17%	8	0.42%
Rock Island	54	23.48%	459	24.32%
Rock Island County	4	1.74%	18	0.95%
Silvis	8	3.48%	90	4.77%
Taylor Ridge	6	2.61%	41	2.17%
TOTALS	230	100%	1,887	100%
LF - Satellite	6	3%	134	7%
MRF - Permanent	224	97%	1,753	93%
TOTALS	230	100%	1,887	100%
ROCK ISLAND COUNTY PRODUCT EXCHANGE USE				
	APRIL	TOTAL FY17		
Participants	4	9		
Materials	Automotive, Household, Home Improvement, Lawn & Garden, Latex Paint, Oil Based Paint			
Total Pounds	456	9,876		
ROCK ISLAND COUNTY CESQG'S				
	APRIL	TOTAL FY17		
Participants	6	108		
Revenue	\$ 773.83	\$ 45,026.62		
Pounds	1,327.0	54,399.2		

HHM OPERATIONAL REPORT FOR THE MONTH OF APRIL, 2017

TOTAL HHM PARTICIPANTS				
	MONTH OF APRIL, 2017		FISCAL YEAR-TO-DATE	
Scott County	790	77%	7,256	79%
Rock Island County	230	23%	1,887	21%
TOTALS	1,020	100%	9,143	100%
LF - Satellite	11	1%	465	5%
MRF - Permanent	1,009	99%	8,678	95%
TOTALS	1,020	100%	9,143	100%
TOTAL PRODUCT EXCHANGE USE				
	APRIL	TOTAL FY17		
Participants	80	728		
Materials	Automotive, Household, Home Improvement, Lawn & Garden, Latex Paint, Oil Based Paint			
Total Pounds	1,785	33,103		
TOTAL CESQG'S				
	APRIL	TOTAL FY17		
Participants	38	392		
Revenue	\$ 7,475.15	\$ 96,387.30		
Pounds	10833.6	120834.8		

HHM OPERATIONAL REPORT FOR THE MONTH OF MAY, 2017

SCOTT COUNTY HHM PARTICIPANTS				
COMMUNITY	MONTH OF MAY, 2017		FISCAL YEAR-TO-DATE	
	TOTAL CUSTOMERS	% OF CUSTOMERS	TOTAL CUSTOMERS	% OF CUSTOMERS
Bettendorf	269	32.76%	1,058	16.43%
Blue Grass	16	1.95%	128	1.99%
Buffalo	2	0.24%	18	0.28%
Davenport	437	53.23%	4,329	67.22%
Dixon	11	1.34%	53	0.82%
Donahue	6	0.73%	47	0.73%
Eldridge	38	4.63%	339	5.26%
LeClaire	14	1.71%	173	2.69%
Long Grove	12	1.46%	100	1.55%
Maysville	0	0.00%	6	0.09%
McCausland	0	0.00%	8	0.12%
New Liberty	0	0.00%	10	0.16%
Park View	4	0.49%	35	0.54%
Pleasant Valley	0	0.00%	0	0.00%
Princeton	2	0.24%	28	0.43%
Riverdale	1	0.12%	19	0.30%
Scott County	2	0.24%	18	0.28%
Walcott	7	0.85%	71	1.10%
TOTALS	821	100%	6,440	100%
LF - Satellite	5	1%	336	4%
MRF - Permanent	816	99%	7,741	96%
TOTALS	821	100%	8,077	100%
SCOTT COUNTY PRODUCT EXCHANGE USE				
	MAY	TOTAL FY17		
Participants	91	221		
Materials	Automotive, Household, Home Improvement, Lawn & Garden, Latex Paint, Oil Based Paint			
Total Pounds	3,156	26,383		
SCOTT COUNTY CESQG'S				
	MAY	TOTAL FY17		
Participants	46	330		
Revenue	\$ 6,846.87	\$ 58,207.55		
Pounds	7,372.2	73,808		

HMM OPERATIONAL REPORT FOR THE MONTH OF MAY, 2017

ROCK ISLAND COUNTY HMM PARTICIPANTS				
COMMUNITY	MONTH OF MAY, 2017		FISCAL YEAR-TO-DATE	
	TOTAL CUSTOMERS	% OF CUSTOMERS	TOTAL CUSTOMERS	% OF CUSTOMERS
Andalusia	0	0.00%	33	1.61%
Carbon Cliff	0	0.00%	3	0.15%
Coal Valley	10	6.06%	121	5.90%
East Moline	42	25.45%	337	16.42%
Hampton	0	0.00%	40	1.95%
Hillsdale	0	0.00%	10	0.49%
Illinois City	1	0.61%	8	0.39%
Milan	8	4.85%	130	6.34%
Moline	45	27.27%	598	29.14%
Port Byron	8	4.85%	91	4.43%
Rapids City	1	0.61%	15	0.73%
Reynolds	0	0.00%	8	0.39%
Rock Island	43	26.06%	502	24.46%
Rock Island County	0	0.00%	18	0.88%
Silvis	4	2.42%	94	4.58%
Taylor Ridge	3	1.82%	44	2.14%
TOTALS	165	100%	2,052	100%
LF - Satellite	2	1%	136	7%
MRF - Permanent	163	99%	1,916	93%
TOTALS	165	100%	2,052	100%
ROCK ISLAND COUNTY PRODUCT EXCHANGE USE				
	MAY	TOTAL FY17		
Participants	2	11		
Materials	Automotive, Household, Home Improvement, Lawn & Garden, Latex Paint, Oil Based Paint			
Total Pounds	1,356	11,232		
ROCK ISLAND COUNTY CESQG'S				
	MAY	TOTAL FY17		
Participants	11	119		
Revenue	\$ 4,011.00	\$ 49,037.62		
Pounds	8,517.6	62,917		

HHM OPERATIONAL REPORT FOR THE MONTH OF MAY, 2017

TOTAL HHM PARTICIPANTS				
	MONTH OF MAY, 2017		FISCAL YEAR-TO-DATE	
Scott County	821	83%	8,077	80%
Rock Island County	165	17%	2,052	20%
TOTALS	986	100%	10,129	100%
LF - Satellite	7	1%	472	5%
MRF - Permanent	979	99%	9,657	95%
TOTALS	986	100%	10,129	100%
TOTAL PRODUCT EXCHANGE USE				
	MAY	TOTAL FY17		
Participants	93	821		
Materials	Automotive, Household, Home Improvement, Lawn & Garden, Latex Paint, Oil Based Paint			
Total Pounds	4,512	37,615		
TOTAL CESQG'S				
	MAY	TOTAL FY17		
Participants	57	449		
Revenue	\$ 10,857.87	\$ 107,245.17		
Pounds	15889.8	136724.6		

HHM OPERATIONAL REPORT FOR THE MONTH OF JUNE, 2017

SCOTT COUNTY HHM PARTICIPANTS				
COMMUNITY	MONTH OF JUNE, 2017		FISCAL YEAR-TO-DATE	
	TOTAL CUSTOMERS	% OF CUSTOMERS	TOTAL CUSTOMERS	% OF CUSTOMERS
Bettendorf	306	32.35%	1,364	18.47%
Blue Grass	14	1.48%	142	1.92%
Buffalo	3	0.32%	21	0.28%
Davenport	527	55.71%	4,856	65.75%
Dixon	13	1.37%	66	0.89%
Donahue	6	0.63%	53	0.72%
Eldridge	23	2.43%	362	4.90%
LeClaire	28	2.96%	201	2.72%
Long Grove	9	0.95%	109	1.48%
Maysville	3	0.32%	9	0.12%
McCausland	1	0.11%	9	0.12%
New Liberty	3	0.32%	13	0.18%
Park View	1	0.11%	36	0.49%
Pleasant Valley	0	0.00%	0	0.00%
Princeton	2	0.21%	30	0.41%
Riverdale	1	0.11%	20	0.27%
Scott County	4	0.42%	22	0.30%
Walcott	2	0.21%	73	0.99%
TOTALS	946	100%	7,386	100%
LF - Satellite	6	1%	342	4%
MRF - Permanent	940	99%	8,681	96%
TOTALS	946	100%	9,023	100%
SCOTT COUNTY PRODUCT EXCHANGE USE				
	JUNE	TOTAL FY17		
Participants	98	189		
Materials	Automotive, Household, Home Improvement, Lawn & Garden, Latex Paint, Oil Based Paint			
Total Pounds	2,532	28,915		
SCOTT COUNTY CESQG'S				
	JUNE	TOTAL FY17		
Participants	40	370		
Revenue	\$ 7,173.75	\$ 65,381.30		
Pounds	8,630.6	82,438.4		

HMM OPERATIONAL REPORT FOR THE MONTH OF JUNE, 2017

ROCK ISLAND COUNTY HMM PARTICIPANTS				
COMMUNITY	MONTH OF JUNE, 2017		FISCAL YEAR-TO-DATE	
	TOTAL CUSTOMERS	% OF CUSTOMERS	TOTAL CUSTOMERS	% OF CUSTOMERS
Andalusia	1	0.43%	34	1.49%
Carbon Cliff	2	0.86%	5	0.22%
Coal Valley	10	4.29%	131	5.73%
East Moline	37	15.88%	374	16.37%
Hampton	5	2.15%	45	1.97%
Hillsdale	1	0.43%	11	0.48%
Illinois City	1	0.43%	9	0.39%
Milan	30	12.88%	160	7.00%
Moline	71	30.47%	669	29.28%
Port Byron	5	2.15%	96	4.20%
Rapids City	3	1.29%	18	0.79%
Reynolds	0	0.00%	8	0.35%
Rock Island	53	22.75%	555	24.29%
Rock Island County	7	3.00%	25	1.09%
Silvis	5	2.15%	99	4.33%
Taylor Ridge	2	0.86%	46	2.01%
TOTALS	233	100%	2,285	100%
LF - Satellite	4	2%	140	6%
MRF - Permanent	229	98%	2,145	94%
TOTALS	233	100%	2,285	100%

ROCK ISLAND COUNTY PRODUCT EXCHANGE USE		
	JUNE	TOTAL FY17
Participants	5	16
Materials	Automotive, Household, Home Improvement, Lawn & Garden, Latex Paint, Oil Based Paint	
Total Pounds	1,182	12,414

ROCK ISLAND COUNTY CESQG'S		
	JUNE	TOTAL FY17
Participants	5	124
Revenue	\$ 12,518.11	\$ 61,555.73
Pounds	1,244	64,161

Includes John Deere Event/corporate-sponsored, residential items/counted as 1 participant, rev. added, lbs. not

HHM OPERATIONAL REPORT FOR THE MONTH OF JUNE, 2017

TOTAL HHM PARTICIPANTS				
	MONTH OF JUNE, 2017		FISCAL YEAR-TO-DATE	
Scott County	946	80%	9,023	80%
Rock Island County	233	20%	2,285	20%
TOTALS	1,179	100%	11,308	100%
LF - Satellite	10	1%	482	4%
MRF - Permanent	1,169	99%	10,826	96%
TOTALS	1,179	100%	11,308	100%
TOTAL PRODUCT EXCHANGE USE				
	JUNE	TOTAL FY17		
Participants	103	924		
Materials	Automotive, Household, Home Improvement, Lawn & Garden, Latex Paint, Oil Based Paint			
Total Pounds	3,714	41,329		
TOTAL CESQG'S				
	JUNE	TOTAL FY17		
Participants	45	494		
Revenue	\$ 19,691.86	\$ 126,937.03		
Pounds	9875	146599.6		

D. Summary of the Storm Water Activities the City of East Moline plans to undertake from March 2018 to March 2019.

The City of East Moline has partnered with an organization named Respect Ability. Respect Ability is on the frontlines in helping philanthropists learn how to welcome, include, serve and benefit from the talents of people with physical, learning, sensory, intellectual, mental health and other disabilities who often are left out of the diversity discussion.

The City provides the materials and Storm Water Pollution Prevention knowledge/guidance and they provide the much-needed volunteer labor. The City of East Moline has other projects scheduled with this Organization in the Annual Reporting period.

The following picture is of Respect Ability installing both Erosion Control (Excelsior Blanket) and Sediment Control (Filter Log) along a 900 foot stretch of 18th Avenue from 11th Street towards 13th Street in East Moline. This picture was taken March 23, 2018.



E. Notice

The City of East Moline is not relying on another government entity to satisfy some of its permit obligations.

F. 2017 Construction Projects

- 000-2017 MFT Packets
- 001-2017 7th Street STP
- 002-2017 11th St-12th St-27th Av
- 003-2017 8th St-9th St
- 004-2017 Utility Acc Permit 17-01 - Mediacom-CCI Systems
- 005-2017 McDonald's Site Improvements
- 006-2017 Bridge Inspections 2017
- 007-2017 PCC Patching Program (MFT)
- 008-2017 Sealcoat Program (MFT)
- 009-2017 HMA Resurfacing Program (MFT)
- 010-2017 Pavement Marking Program (NHR)
- 011-2017 Soule Bowl Improvements - UTHS
- 012-2017 RR Alley Sewer Study
- 013-2017 3rd Street RR X-ing Replacement
- 014-2016 7th Street RR X-ing Replacements
- 015-2017 Green Chevrolet - Bldg Image Upgrade
- 016-2017 Hyatt Place - East Moline
- 017-2017 Sewer Manhole Replacement & Emergency Repairs
- 018-2017 Utility Acc Permit 17-02 - Geneseo Telecom - Aquent
- 019-2017 Utility Acc Permit 17-03 - Geneseo Telecom - GMAC
- 020-2017 World Class Industries Expansion
- 021-2017 Utility Acc Permit 17-04 - Geneseo Telecom - Cell tower
- 022-2017 Jim Abbitt Drainage Issue
- 023-2017 Utility Acc Permit 17-05 - Geneseo Telecom - Blackhawk Bank
- 024-2017 Utility Acc Permit 17-06 - Geneseo Telecom - East Moline Glass
- 025-2017 Council Chambers Update
- 026-2017 ISWS Flood Structure Survey
- 027-2017 Misc Engineering Assistance - MFT Projects
- 028-2017 Misc Construction Inspection & Testing
- 029-2017 Easement Troy Subdivision
- 030-2017 Fire Dept Boat House
- 031-2017 Utility Acc Permit 17-07 - PEG - Derbytech
- 032-2017 Wells School Parking Lot
- 033-2017 Utility Acc Permit 17-08 and 17-09 PEG Various
- 034-2017 Sewer Lining Program
- 035-2017 Annexation 3010-18th St
- 036-2017 MetroLINK Shelter - Deerfield Woods
- 037-2017 EMG TIF
- 038-2017 Emergency Repair - 2nd St Ct Erosion
- 039-2017 I-74 Dredge Spoils on GRP Site GD-2017-05
- 040-2017 Interstate 74 Bridge - Emergency Communication
- 041-2017 Utility Acc Permit 17-10 Geneseo Telecom - Vibrant
- 042-2017 Emergency Sewer Repair 937 - 28th Ave
- 043-2017 MidAmerican Energy UG Electric 30th Av
- 044-2017 Kings Farm - Detention Pond & Outlot Maint
- 045-2017 Blackhawk College Outreach Center - Water Service
- 046-2017 Park Place Villas
- 047-2017 Utility Acc Permit 17-11 Comm Data Link
- 048-2017 7th Street Watermain (30th Av - 41st Av)
- 049-2017 Roundabouts Illinois
- 051-2017 Utility Acc Permit 17-12 Mediacom-HartCo for JDIS
- 052-2017 QC Marathon Property Subdivision Plat
- 053-2017 Vermeer Development IL 5
- 054-2017 Sugar Creek Monitoring Equipment
- 055-2017 Utility Acc Permit 17-13 Geneseo Comm for Service Steel
- 056-2017 Emergency Street Repair - 18th Av at 17th St
- 057-2017 UTHS Building Addition
- 058-2017 Emery Construction Fill Site
- 059-2017 Sakas Subdivision
- 060-2017 New HP DesignJet Plotter
- 061-Resident Lateral Repair - 524 15th Av
- x-Council-COW
- x-Misc Issues